

MAY 5 – 6, 2025

— MYSTIC LAKE CENTER —

**MINNESOTA
SAFETY & HEALTH
CONFERENCE**

**EVENT PROGRAM &
EXHIBITOR GUIDE**

VISIT THE EXHIBIT HALLS!

Monday, May 5 | 8:00 AM – 3:30 PM

Tuesday, May 6 | 8:00 AM – 3:00 PM



MINNESOTA SAFETY COUNCIL
CHAPTER OF  **NSC**

2025 CONFERENCE SPONSORS

SFM[®]

The Work Comp Experts

DIAMOND SPONSOR



PLATINUM SPONSORS



GOLD SPONSORS



SILVER SPONSORS

Adolfson + Peterson Construction

AIHA

1Consultant LLC

Celebrate Safety Inc.

Cintas

Danfoss Power Solutions

3M

Northern Tool & Equipment

Rachel Contracting

BRONZE SPONSORS

RESA Power

RJM Construction

TKDA

NICKEL SPONSORS

Abhe & Svoboda, Inc.

Airgas

Chet's Shoes, LLC

Horwitz LLC



WHAT'S INSIDE?

- ▶ **Conference Reminders** 4
- ▶ **Conference at a Glance** 5 – 6
- ▶ **Mystic Lake Center Map** 7
- ▶ **Governor's Workplace Safety Award Winners** 9 – 12
- ▶ **Sessions | Monday, May 5** 13 – 18
- ▶ **Networking Reception** 18
- ▶ **Sessions | Tuesday, May 6** 19 – 24
- ▶ **Professional Development Courses (PDC)
Wednesday, May 7** 25 – 26
- ▶ **Exhibit Halls & Exhibitors** 28
- ▶ **Minnetonka & Isanti Exhibit Hall Maps** 29
- ▶ **Exhibitors A–Z**..... 30
- ▶ **Exhibitors by Category** 31 – 32
- ▶ **Meet Our Exhibitors** 33 – 44

CONFERENCE REMINDERS



WELCOME to the 2025 Minnesota Safety & Health Conference! Find the detailed Event Program & Exhibitor Guide in our **NEW Conference App**, along with exhibitor and speaker information, session surveys and more! A “quick look” printed copy of the program is also available.

■ BREAKFAST

A complimentary grab-and-go breakfast, juice and coffee will be available in the foyer of the Mystic Showroom on the way into the Opening Sessions on Monday and Tuesday from 6:30 – 7:30 AM.

■ OPENING SESSIONS

Opening Sessions/Keynotes start at 7:30 AM on Monday and Tuesday and will take place in the Mystic Showroom (upstairs and down the hall towards the casino). There will be signage as well as Minnesota Safety Council staff and Mystic Lake employees to help direct attendees.

■ GOVERNOR’S WORKPLACE SAFETY AWARDS

All winners will be recognized on the large screens prior to Opening Sessions on both days. Gold, Silver and Bronze Award winners will be asked to stand during the Opening Session on Monday, May 5 and can pick up their certificates in the Pre-Function Area anytime on Monday or Tuesday. Diamond and Platinum Awards and new MNSTAR/MNSHARP certificates will be presented on stage on Tuesday, May 6.

■ NAME BADGES

Name badges will not be required to gain entrance to the Opening Sessions on both days, but attendees will be required to wear their name badges throughout each day to gain access to all other sessions, lunch and the Networking Reception. Attendees can pick up their name badges before and after Opening Session.

■ SESSION ROOMS

Session rooms and times are listed in the Program and on the Kiosk TVs in the Pre-Function Area.

■ EXHIBIT HALLS

Visit over 115 vendors in our two Exhibit Halls, the Minnetonka Ballroom and the Isanti Ballroom, plus in the Pre-Function Lobby. Both Exhibit Halls are open on Monday from 8:00 AM – 3:30 PM and on Tuesday from 8:00 AM – 3:00 PM.

■ LUNCH

Lunch will be set up in the Pre-Function Area on Monday and Tuesday from 12:15 – 1:30 PM. Pick up something to eat and stroll through the Exhibit Halls, or settle into a comfortable spot in Mystic Lake Center. Indoor lunch seating is available in Waconia I & II, the upper-level hallway by Chaska and Winona, and throughout the Pre-Function Area. Seating will also be available outside under the tent-covered patio. Both days will include dessert during the Door Prize give-aways in the Isanti Ballroom on Monday, and the Minnetonka Ballroom on Tuesday.

■ DOOR PRIZE DRAWINGS

Visit the Minnesota Safety Council Booth (623/624) in the Isanti Ballroom for a free gift! At our booth, there’s a gold-colored barrel — drop your door prize ticket in the barrel each day. One ticket per day as noted on the door prize ticket received with your name badge (*do not put Tuesday’s ticket in until Tuesday*). The drawing on Monday is at 2:30 PM in the Isanti Ballroom and on Tuesday at 2:30 PM in the Minnetonka Ballroom. You don’t have to be present to win. Winner prizes will be labeled and at the Minnesota Safety Council Booth for pick up.

■ OUTDOOR DEMOS

Demos will be held outside in the Front Turn Around (out front from the Registration Desk) and in the North Parking Lot (out the north entrance and up the steps). In case of bad weather, each demo has a classroom backup — check the Program or Kiosk TVs.

■ NETWORKING RECEPTION

Come relax and enjoy delicious hors d’oeuvres, a cash bar and entertainment at the Networking Reception on Monday, May 5 from 4:30 – 6:30 PM in the Pre-Function Area. This is a great opportunity to connect with other conference attendees, exhibitors and the Minnesota Safety Council team.

■ WIFI ACCESS

Mystic Lake Center provides free wireless coverage throughout the event space. No password is needed.

CONFERENCE AT A GLANCE | MONDAY, MAY 5

8:00 AM – 3:30 PM	EXHIBIT HALLS OPEN MINNETONKA & ISANTI BALLROOMS	
7:30 – 9:00 AM	OPENING SESSION & AWARDS Keynote: <i>Generational Crossroads Featuring Steve Bench</i>	Mystic Showroom
9:15 – 9:45 AM	FIRST-TIME ATTENDEE OVERVIEW SESSION	Waconia 1
10:00 – 11:00 AM	BREAKOUT SESSIONS	
	Chainsaw Safety	Anoka 3
	Do OSHA Regulations Prevent Every Injury?	Winona
	Ergonomic Solutions for Machinery Operators: Enhancing Safety and Performance	Owatonna
	Fall Protection: Protecting Workers at Heights Outdoor Demo Front Turn Around/Chaska	
	Generation Z: Manager’s Survival Guide	Waconia 3
	The Spectrum of Violence in the Workplace	Waconia 5
	What is a Recovery Friendly Workplace (RFW)?	Anoka 1–2
11:15 AM – 12:15 PM	BREAKOUT SESSIONS	
	Are Incident Rates Reliable and Representative Measures of Safety Program Performance?	Owatonna
	Hands-On Load Securement Training Outdoor Demo North Parking Lot/Chaska	
	Multi-Employer Citations: Controlling Hazards and Preventing OSHA Citations	Winona
	What Do We Say? Understanding Crisis Communication Following Safety Incidents	Waconia 5
11:15 AM – 12:45 PM	BREAKOUT SESSIONS	
	Ergonomic Program Design and Implementation	Anoka 1–2
	Intro to High Voltage Electrical Vehicle (EV) Safety Outdoor Demo Front Turn Around/Anoka 3	
	Situational Awareness and De-Escalation for Safety Professionals	Waconia 3
12:15 – 1:30 PM	LUNCH SEATING: PRE-FUNCTION AREA + WACONIA I & II + UPPER LEVEL HALLWAY + OUTSIDE PATIO	
1:30 – 2:30 PM	BREAKOUT SESSIONS	
	Employee Involvement in Safety Programs	Waconia 3
	Excavation/Trench Safety Outdoor Demo North Parking Lot/Chaska	
	From Pain to Productivity: How Ergonomic Programs Improve Decision Making	Winona
	Implementing a Naloxone Voluntary Use Program	Anoka 3
	Lifesaving Tips When Facing an Armed Intruder or Active Shooter	Owatonna
	Stop, Collaborate and Listen: Improving Safety Outcomes with Teamwork	Waconia 5
	The OSHA Indiana Jones’ — Expert Tips and Tricks for Finding OSHA Information	Anoka 1–2
3:30 – 4:30 PM	BREAKOUT SESSIONS	
	Construction Safety Best Practices — The Case for Safety Excellence	Winona
	Driving Safely Through the Years — Seasoned Drivers	Anoka 3
	Integrating Safety Into Your Organization	Waconia 5
	MN OSHA Update	Waconia 3
	Quick Screens: A Roadmap to Sprain/Strain Solutions	Chaska
	Safety Board of Directors: The New Safety Committee	Anoka 1–2
	Training Outside the Box	Owatonna
4:30 – 6:30 PM	NETWORKING RECEPTION	Pre-Function Area

CONFERENCE AT A GLANCE | TUESDAY, MAY 6

8:00 AM – 3:00 PM **EXHIBIT HALLS OPEN | MINNETONKA & ISANTI BALLROOMS**

7:30 – 9:00 AM **OPENING SESSION & AWARDS** Mystic Showroom
Keynote: Building a Better Tomorrow: The Future of Safety and Health Featuring Jason Kunz

10:00 – 11:00 AM **BREAKOUT SESSIONS**

Building Effective Safety Committees	Waconia 3
Confined Space Entry	Outdoor Demo North Parking Lot/Chaska
Focus Four for Health: An Initiative to Address Construction Health Hazards	Anoka 3
Getting Started with Leading Indicators	Owatonna
I Am NEW To Safety! Now What?	Anoka 1–2
Road to Self-Care: Mental Health, Fatigue and Driving	Winona
The Leadership Blueprint: Moving from Idea to Implementation	Waconia 5

11:15 AM – 12:15 PM **BREAKOUT SESSIONS**

Better Workers' Compensation Claim Outcomes	Owatonna
Emergency Recognition & Response In The Workplace	Winona
Heat Stress: The Often-Over-Looked Safety Hazard	Waconia 3

11:15 AM – 12:45 PM **BREAKOUT SESSIONS**

Contractors as Family: It Can Be Done!	Anoka 3
Generational Motivation: How to Motivate Different Generations to Build a Strong Safety Culture	Waconia 5
Plan, Practice, Prevail: Enhancing Your Emergency Restoration Readiness	Chaska
Stay on Top of Your Lockout/Tagout Program	Anoka 1–2

12:15 – 1:30 PM **LUNCH | SEATING: PRE-FUNCTION AREA + WACONIA I & II + UPPER LEVEL HALLWAY + OUTSIDE PATIO**

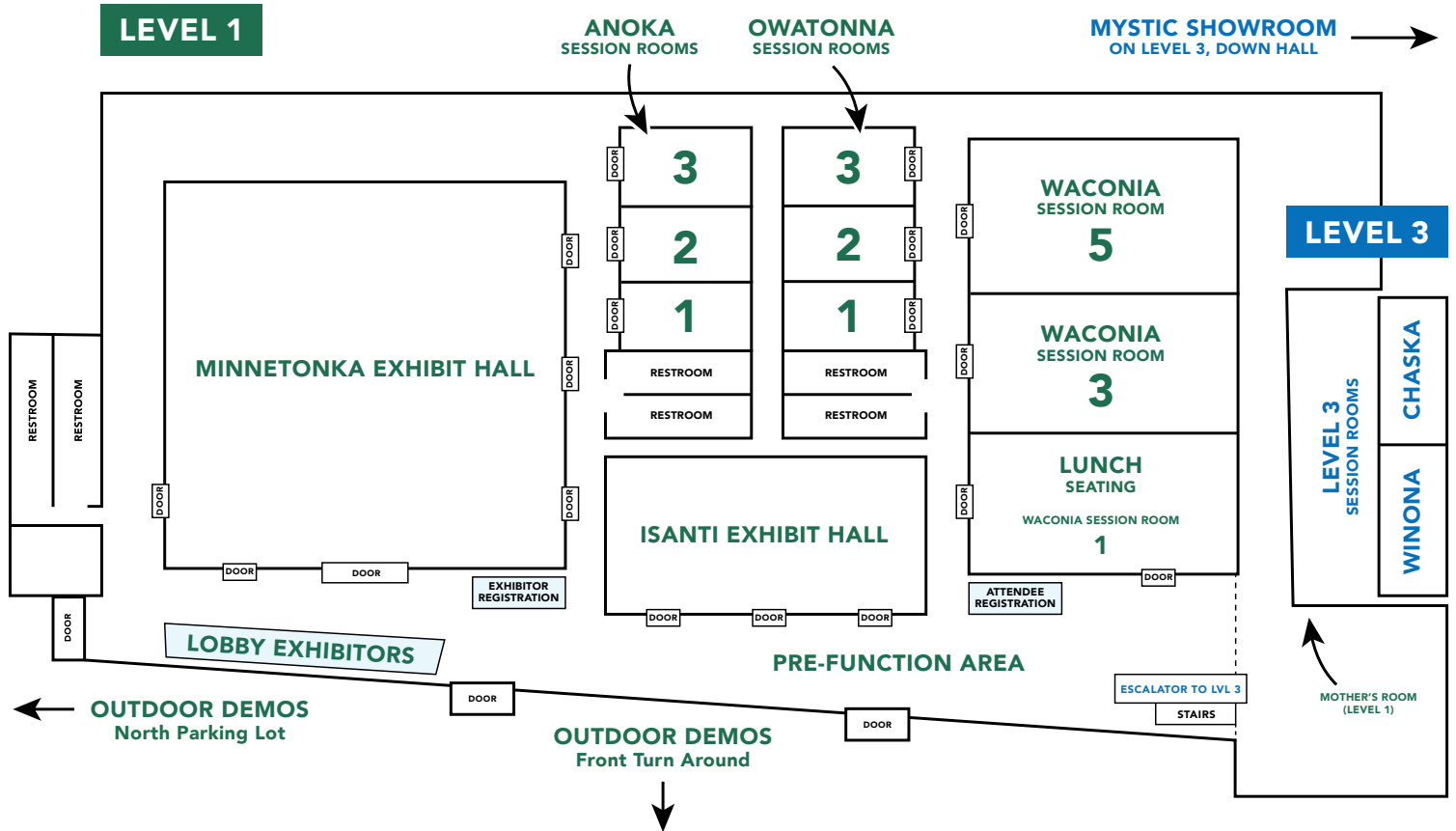
1:30 – 2:30 PM **BREAKOUT SESSIONS**

AI in Workplace Safety: Innovations, Applications and Best Practices	Waconia 5
From Fatigue to Flourishing	Anoka 3
Human and Organizational Performance (HOP) — Serious Injury and Fatality Discussions Part 1	Anoka 1–2
Keeping Workers Safe — The First 90 Days	Waconia 3
Machine Guarding Basics — How to Assess Your Facility	Winona
Reasonable Suspicion Training Part 1 (Attend Part 2 for Certificate)	Owatonna
The 101's on NFPA 70E Standard and The Changes from 2024	Chaska

3:15 – 4:15 PM **BREAKOUT SESSIONS**

Behavioral Health and Resilience in the Workplace	Chaska
Don't Just Check the S&H Training Box: How to Use AI and Neurodiversity to Make Training Better	Winona
Emergency Action Plan – Is Your Facility Compliant?	Waconia 3
Human and Organizational Performance (HOP) — Serious Injury and Fatality Discussions Part 2	Anoka 1–2
Magic: From Walk-Through Inspection to Management Recommendations	Waconia 5
Reasonable Suspicion Training Part 2 (Must Attend Part 1)	Owatonna
Sampling Success: Navigating the Pitfalls of Industrial Hygiene Sampling	Anoka 3

MYSTIC LAKE CENTER



BOARD OF DIRECTORS

MSC is dedicated to preventing injuries and saving lives.

CHAIR

Steve Schoeneck, *Otter Tail Power Company*

INCOMING CHAIR

To be announced

VICE CHAIR

Saverio Marcario, *Global Supply Chain Aveda Corporation*

ASSOCIATE CHAIR

Jeffrey Jarvela, *Cleveland-Cliffs Inc.*

PAST CHAIR

Bert Flynn, *Retired, Xcel Energy*

CO-CHAIR, BOARD OF TRUSTEES

Jeffrey S. Ogden, *Retired*

CO-CHAIR, BOARD OF TRUSTEES

Steven Sandilla, *SFM*

BOARD PRESIDENT

Paul W. Aasen, *Minnesota Safety Council*

VICE PRESIDENT – FINANCE

Deb Nistler, *Etterman Enterprises*

VICE PRESIDENTS

Katharine Bonneson, *University Health and Safety, University of Minnesota*

Phillip L. Jensen, *Chubb Insurance*

Ryan Vieau, *Tailing LLC*

DIRECTORS

Kevin Balfanz, *MCIT*

Nicole Blissenbach, *Minnesota Dept. of Labor & Industry*

Harper Brickson, *Minnesota Power/Allete*

Molly Coskran, *AIHA Upper Midwest Local Section/Heed Environmental Health, LLC*

Brandon Cramer, *Distribution Design & Construction, Xcel Energy*

Karen Cuta, *Application Engineering, 3M Center*

Garrett Doucette, *Anderson Custom Processing, Inc.*

Mark Friske, *The Sherwin-Williams Company*

Chuck Kendall, *CHS, Inc*

Alanna Lee, *ASSP Northwest Chapter, Cirrus Aircraft*

Scott Sainsbury, *CenterPoint Energy*

Nate Snyder, *Safety and Security, Red Wing Shoe Co.*



MINNESOTA SAFETY COUNCIL

CHAPTER OF nsc

474 Concordia Ave, St. Paul, MN 55103
651-291-9150/800-444-9150

minnesotasafetycouncil.org

The Minnesota Safety Council is a private non-profit organization supported through membership, training, donations and grants.

Is your
workers' comp program
focused on
(safety)
for your employees?

Expect more from
your workers' comp partner.

SFM
The Work Comp Experts®

Contact your independent insurance agent
or go to sfmworkerscomp.com

MINNESOTA OSHA AWARDS

MNSHARP Recertified Companies

Akkerman Incorporated - Brownsdale
Alliance Machine, Inc. - Elk River
Altimate Medical, Inc. - Morton
Anderson Dahlen, Inc. - Ramsey
Central Boiler, Inc. - Greenbush
Gemini, Inc. - Cannon Falls
Lou Rich Inc. – Front St. Albert Lea

Western Lake Superior Sanitary District (WLSSD) Courtland Street Facilities - Duluth

MNSHARP Recipients

Anderson Dahlen, Inc. – Applied Vacuum Division - Waconia
Knutson Construction - Rochester
Mass Finishing, Inc. - Howard Lake
Molin Concrete Products - Ramsey
Northern Pride, Inc. - Thief River Falls

MNSTAR Recertified Companies

Aptim Services, LLC - Rosemount
Cintas FAS - Brooklyn Park
DSM - Firmenich - New Ulm
PotlatchDeltic Corporation - Bemidji Lumbermill

MNSTAR Recipients

Cintas – Location #12K Minneapolis
Malco Tools Inc. - Annandale

GOVERNOR'S WORKPLACE SAFETY AWARDS Winners – 2024 Calendar Year

DIAMOND AWARD WINNERS

Achieved an incidence-rate better than the 97th percentile of both the state and national average

1Consultant Group

Abbott Laboratories - Minnetonka Building 7

Abhe & Svoboda, Inc.

Atlas Foundation Company

Baxter - St.Paul

Cargill, Inc. - Blooming Prairie

Cintas - First Aid & Safety

Cooperative Light & Power

Crown Cork & Seal - Faribault

Element Materials Technology - Minneapolis Bloomington

Energy Center Minneapolis

Foth

GCC - Albertville

Gordon Construction of Mahnomen, Inc

International Paper
Minneapolis Sheet

KW Specialty Services

McKimm Milk Transit, Inc.

Mechanical Systems Inc

Medtronic - Rice Creek Campus

Minnesota Department of Military Affairs

Modern

MSP, a Division of TSI®

NatureWorks LLC

RIE Coatings, LLC

S-O-S Industrial Services

Special Care Dentistry - Brainerd

Special Care Dentistry - Cambridge

Special Care Dentistry - Fergus Falls

Special Care Dentistry - Willmar

Syngenta Seeds - Amboy, MN

Uni-Systems Engineering, Inc

Viking Gas Transmission Company

Westinghouse Electric Company - Fuel Handling Equipment and Manufacturing

World Data Products Inc.

PLATINUM AWARD WINNERS

Achieved an incidence-rate better than the 90th percentile of both the state and national average

Abbott Labs - EP Tech Center

Abbott - Woodridge

BAE Systems

Corval Group

DuPont FilmTec Manufacturing Facility - Edina

Granterion 3PL Solutions

Harris St. Paul, Inc.

Northrop Grumman - Plymouth

Plaas Incorporated

State of MN - Dept. of Human Services Central Office

State of MN - MNSure

Sherwin-Williams

GOVERNOR'S WORKPLACE SAFETY AWARDS

Winners – 2024 Calendar Year

GOLD AWARD WINNERS

Achieved an incidence-rate better than the 75th percentile of both the state and national average

Abbott - Roseville Distribution Center	Energy Economics, Inc.	Minnesota Energy Resources Corporation
Abbott Labs - Plymouth	Flint Hills Resources Pine Bend - Pipelines & Terminals	MN Department of Education
Adolfson and Peterson Construction	Grede	PCL Construction Services, Inc.
Air Liquide Electronics U.S. LP Advance Equipment Systems	Hearthside Food Solutions LLC - Shakopee	Pioneer Power, Inc.
Ames Construction	Honeywell ACST	Plymouth Annapolis
Barr Engineering Co. - Duluth	Horwitz, LLC	Southern Minnesota Municipal Power Agency
Barr Engineering Co. - Corporate	Hunt Electric Corporation	SunOpta - Minnesota Street Alexandria
Brunswick - New York Mills Operation	Jostens, Inc. - Broadway	TEL Manufacturing and Engineering of America
BTD Manufacturing - Detroit Lakes	Jostens, Inc. - Eagan	Todd-Wadena Electric Cooperative
BTD Manufacturing - Lakeville (Cedar Avenue)	Malco Tools, Inc.	Uponor North America - Apple Valley Campus
Carley Foundry, Inc.	Medtronic - Brooklyn Park	Uponor North America - Lakeville Distribution Center
Cottonwood County Courthouse	Medtronic - Energy and Component Center	Velocity - MMD
Dakota County	Meyer Contracting	Wescom Inc
DCCI	Minnesota Correctional Facility - Togo	
Douglas Machine Inc.	Minnesota Correctional Facility - Willow River	

FIND US ON SOCIAL MEDIA



#MNSAFETY2025



GOVERNOR'S WORKPLACE SAFETY AWARDS

Winners – 2024 Calendar Year

SILVER AWARD WINNERS

Achieved an incidence-rate better than the 50th percentile of both the state and national average

Abbott Laboratories - Minnetonka Building 4

Abbott Laboratories - Minnetonka Building 8

Andersen Corporation - Bayport Site

Anderson Custom Processing, Inc

Barr Engineering Co. - Hibbing

Braun Intertec

Brewers Supply Group (BSG)

Cambria FabShop

Cambria

Carl Bolander & Sons

Carver County

Century College - Minnesota State

Cintas - 470

Cirrus Aircraft

City of Duluth

Clearfield, Inc.

Cleveland Cliffs Minorca Mine, Inc.

CNH CASE IH - BENSON

Cretex Medical rms

Crown Cork & Seal

DeZURIK

Dianne's Fine Desserts

Egan Company

Federated Rural Electric & Broadband

Frattonone Companies, Inc.

Gagnon, Inc.

Goodhue County Cooperative Electric Association

Hennepin County

Hibbing Taconite Company

Hubbard County - Road and Bridge

Hormel Foods - Austin Plant

Innovize

Intek Plastics LLC

International Paper - Arden Hills

International Paper - White Bear Lake

Jennie-O Turkey Store - Melrose Plant

Kandiyohi Power Cooperative

LVC Companies, Inc.

McDowall Company

McGough Construction

Metropolitan Council Environmental Services - Construction Services

Minneapolis College

Minnesota Correctional Facility - Moose Lake

Minnesota Paving & Materials

Miomatrix Medical, Inc.

MN Dept of Corrections - St. Cloud

MN Pollution Control Agency

MTS Systems Corporation

Nordic Ware

nVent Systems Protection

Oldcastle/Anchor Block

Pinnacle Wall Systems

Q3 Contracting

Quality Pork Processors Inc.

Rachel Contracting

Restoration Systems Inc.

Rochester Public Utilities

Rolls-Royce Solutions America - Mankato

Russ Davis Wholesale Inc. - Rice Street

T.O. Plastics - Otsego

Thermo-Tech Windows

TKDA

Uhl Company

United Taconite LLC

VEIT

Washington County

Winona State University

FIND US ON SOCIAL MEDIA



#MNSAFETY2025



GOVERNOR'S WORKPLACE SAFETY AWARDS

Winners – 2024 Calendar Year

BRONZE AWARD WINNERS

Achieved an incidence-rate better than the 50th percentile of either the state or national average

Bay West LLC	Hubbard County - Revenue (County Offices)	Midwest Machinery Co. - Rosemount
Boston Scientific - Cardiac Rhythm Management	Institute for Environmental Assessment, Inc.	Midwest Machinery Co. - Wanamingo
BTD Manufacturing - Lakeville (Heywood Avenue)	Itasca County	Minnesota Department of Administration
Charps, LLC	JE Dunn Construction Company	Molin Concrete Products - Ramsey Plant
Cold Spring Brewing Company	Johnson Outdoors	Owatonna Public Utilities
Community Behavioral Health Hospital - Alexandria	Marine Electronics	Rahr Malting Company
Community Behavioral Health Hospital - Annandale	Jostens - Southtown	Ramsey Companies
Community Behavioral Health Hospital - Fergus Falls	Kerry - Owatonna, MN	RJM Construction LLC
Cummins Power Systems	Marathon - St. Paul Park Refinery	Seagate Technology - Shakopee Facility
DigiKey - TRF	Meeker Cooperative Light & Power	TEAM Rogers
Fastenal - Winona	Midwest Machinery Co. - Aitkin	Twin City EDM & MFG. INC.
General Dynamics Mission Systems	Midwest Machinery Co. - Baxter	Velocity - CMD
HM Cragg	Midwest Machinery Co. - Glencoe	Wells - Albany
	Midwest Machinery Co. - Grand Meadow	Wells - Wells, MN
	Midwest Machinery Co. - Hastings	Wild Rice Electric Cooperative, Inc
	Midwest Machinery Co. - Princeton	

Every year, the Minnesota Safety Council – and our partners – recognize and celebrate employers throughout the State of Minnesota for safety and health excellence in protecting our workforce from injuries, illnesses and incidents. To be considered for a Minnesota Governor's Workplace Safety Award, an organization must submit an application that includes general information regarding the employer's organization, elements of the employer's safety/health management systems and the injury/illness information for the previous three (3) years.

FOLLOW OUR WEBSITE AND SOCIAL MEDIA TO SEE WHEN THE NEXT GOVERNOR'S AWARD APPLICATION OPENS (JANUARY 2026)

Minnesota Safety Council.org | @MN Safety Council

MONDAY, MAY 5



OPENING SESSION & AWARDS

7:30 – 9:00 AM | MYSTIC SHOWROOM

KEYNOTE: GENERATIONAL CROSSROADS



PRESENTER: Steve Bench, *Generational Consulting*

Today's workplace is at a generational crossroads unlike any other time in our nation's history. As the Baby Boomers ride off into the retirement sunset, Generation X is left to understand and manage an empowered Millennial generation raised with a new set of attitudes and expectations about their work-life balance. And just as we are beginning to understand Millennials, Gen Z is entering the workforce en masse! This keynote session focuses on building understanding of who we are, how we were raised, and how each generation views "work" as a part of their identity, and how we can build successful relationships across the generational lines.

GOVERNOR'S WORKPLACE SAFETY AWARDS

The Governor's Workplace Safety Awards Program has been honoring Minnesota workplaces for excellence in safety since 1934. Join us as we recognize this year's recipients who have achieved outstanding results in safety.

EXPERIENCE LEVELS:

- [1] FUNDAMENTAL
- [2] INTERMEDIATE
- [3] ADVANCED

MONDAY, MAY 5

EXHIBIT HALLS

•••• OPEN ••••

8:00 AM – 3:30 PM

BREAKOUT SESSIONS

9:15 – 9:45 AM

First-Time Attendee Overview Session *Waconia 1*

Are you a first-time conference attendee? Join us for a special meet and greet to connect with other newbies, staff, and volunteers. Get your questions answered and tips to help maximize your Minnesota Safety & Health Conference experience.

10:00 – 11:00 AM

Chainsaw Safety [1] *Anoka 3*



PRESENTER: Rebecca Seibel, *Tree Spirit Consulting, Holmen, WI*

We've all heard the phrase. If you don't use it, you lose it. When we're talking about a tool as hazardous as a chainsaw, it's in everyone's best interest to keep training relevant, up-to-date, and fresh. This session will provide safer chainsaw operation training and education; basic outline of what intermittent chainsaw users need to know; what you need to provide for them; upcoming changes in OSHA regulations for tree care operations; as well as the 2025 ANSI Z-133 standard updates.

Do OSHA Regulations Prevent Every Injury? [All] *Winona*



PRESENTERS: Kyle Meinert, *MBA, CSP, CRA, Principal/Director, Advisory Services*; and Jake Jansen, *Risk Advisor, Acrisure Midwest, Bloomington, MN*

Too often companies only focus on being "OSHA compliant" and less about preventing injuries from happening. This session will cover some of the most common injuries we see that an OSHA regulation would have not prevented. Using our experience, advising some of the biggest companies, we will share ways to prevent these injuries and what to look out for.

Ergonomic Solutions for Machinery Operators: Enhancing Safety and Performance [2] *Owatonna*



PRESENTER: Tim Pottorff, *MEng., CIE, ARM, Principal Ergonomist/Owner, QP3 ErgoSystems, West Dundee, IL*

Nearly every organization owns and operates some sort of equipment or machinery that places their employees at risk from a variety of factors. This presentation focuses on addressing the hidden challenges faced by operators of forklifts and other heavy machinery and aims to equip participants with practical insights and strategies to enhance safety and performance for heavy machinery operators.

Fall Protection: Protecting Workers at Heights [1] *Outdoor Demo Front Turn Around/Chaska*



PRESENTER: Tyler Vujovich, *Fall Protection Specialist, 3M, Richfield, MN*

This session will focus on the importance of fall protection. It will provide an overview of fall protection standards, hazard recognition, a review of fall arrest systems available, and a live demonstration. Fall protection has topped the list of OSHA's top ten violations for many years. Protecting workers at heights takes constant training.

Generation Z: Manager's Survival Guide [All] *Waconia 3*



PRESENTER: Steve Bench, *Generational Consulting, Madison, WI*

Understanding how to work with each generation is fundamentally important, especially with Gen Z entering the workforce in droves. Managers need to provide employees with the resources they need to be successful, and those resources might look different depending on one's generation and life stage. This presentation improves understanding, provides actionable strategies and techniques, and leaves the audience motivated to tackle the intergenerational challenges we face in 2025 and beyond. Learn how to mentor the next generation of workforce talent by finding common ground, and building trust and loyalty.

The Spectrum of Violence in the Workplace [1] *Waconia 5*



PRESENTER: Ben Wood, *JD, MS, CSP, Occupational Safety Manager, Minnesota Safety Council, St. Paul, MN*

In 2022, work-related violence caused the deaths of over 800 workers, and severe injuries to over 85,000 others. Work-related violence is complex, varies from incident to incident, and has many forms outside an "active intruder" incident. This session will introduce participants to basic strategies, concepts and tools to empower organizations to begin to prepare for a violent episode. Are you ready? Or simply relying on a written policy and hoping for the best?

What is a Recovery Friendly Workplace (RFW)? [1] *Anoka 1-2*



PRESENTER: Bryan D. Schafer, *Minnesota Safety Council, St. Paul MN*

The adoption of RFW policies benefits businesses, employees, customers, and society at large. These benefits include a broader labor force, improved worker well-being, reduced turnover, enhanced productivity, and lower healthcare costs. In addition, RFW programs can help reduce impaired driving by providing support for employees with substance abuse disorders. This session will review the steps of the RFW process and discuss a new collaboration with the MN Department of Health and the MN Safety Council that will provide the first step in the process — reasonable suspicion training to employers for free.

EXPERIENCE LEVELS:

- [1] FUNDAMENTAL
- [2] INTERMEDIATE
- [3] ADVANCED

MONDAY, MAY 5

EXHIBIT HALLS

•••• OPEN ••••

8:00 AM – 3:30 PM

BREAKOUT SESSIONS

11:15 AM – 12:15 PM

Are Incident Rates Reliable and Representative Measures of Safety Program Performance? [2]

Owatonna



PRESENTER: Todd Loushine, PhD, PE, CSP, CIH, University of Wisconsin-Whitewater, Whitewater, WI

Does your company use TRIR or DART as a measure of program performance or your job performance? Do you ever find yourself anxious or stressed having to convince others that the safety program is doing better than what the metrics show? In this session, we will review 7 years of OSHA 300A data uploaded to OSHA ITA to demonstrate how incident rates are unreliable measures of safety performance.

Hands-On Load Securement Training: Tools, Techniques, and Regulations [All] Outdoor Demo North Parking Lot/Chaska



PRESENTER: Sergeant Tomasz Krolak, Minnesota State Patrol, Mendota Heights, MN

This hands-on load securement training will demonstrate key topics, including how to properly use tools like ratchet straps, chains, binders, dunnage, and netting to secure loads. It also explains the federal and provincial regulations for cargo securement, ensuring that participants know the legal requirements.

Multi-Employer Citations: Controlling Hazards and Preventing OSHA Citations [2] Winona



PRESENTER: Beth Frampton, Program Specialist, Uni-Systems Engineering, Plymouth, MN

Working on large construction sites in close proximity to multiple contractors with various specialties presents unique safety challenges. In this session, we will discuss strategies for mitigating risks and hazards to keep workers safe and avoid OSHA citations.

What Do We Say? Understanding Crisis Communication Following Safety Incidents [2] Waconia 5



PRESENTER: Lani Jordan, Principal, Lani Jordan Communications, St. Paul, MN

Safety incidents often warrant well-thought-out communication. Based on the severity of events, you may receive media calls. But even without media interest, you'll need to know how to communicate with employees, community members and other stakeholders. Learn how creating a crisis communication plan, including the basics of what you'd do and say, can help you keep your organization's reputation intact.

11:15 AM – 12:45 PM

Ergonomic Program Design and Implementation [3] Anoka 1-2



PRESENTERS: Scott Gesinger, MEHS, CSP, Safety Director, J&B Group, St. Michael, MN and Beth Mayotte, OTR/L, CIEE, Owner, ErgoWorks, Apple Valley, MN

Designing and implementing an ergonomics program can be daunting. By leveraging your internal resources with external experts, an ergonomics program can change company culture and drive meaningful change. This session will cover the Why, Who, What, When, Where, and How of creating an Ergonomics Program.

Intro to High Voltage Electrical Vehicle (EV) Safety [2] Outdoor Demo Front Turn Around/Anoka 3



PRESENTER: Kurt Prieve, CSP, CIH, Sr EHS Manager - Electrification, Polaris Industries, Wyoming, MN

As EV technology reshapes transportation, knowledge on safe work practices is crucial. This engaging course will delve into EV design, electrical safety concepts, and culminate with a practical exercise on an EV. As an introductory course, no background in electrical theory/safety is necessary.

Situational Awareness and De-Escalation for Safety Professionals [1] Waconia 3



PRESENTER: Drew Moldenhauer, Owner and Master Instructor, Blue Ethos Specialized Training, Elk River, MN

Improve your organization's safety with our expert training in situational awareness and high-risk decision-making. We empower workers to thrive in high-stress environments by enhancing critical thinking, resilient problem-solving, and situational awareness. Our strategies equip teams to make better decisions during moments of high vulnerability.

12:15 – 1:30 PM



EXPERIENCE LEVELS:

- [1] FUNDAMENTAL
- [2] INTERMEDIATE
- [3] ADVANCED

MONDAY, MAY 5

EXHIBIT HALLS

•••• OPEN ••••

8:00 AM – 3:30 PM

BREAKOUT SESSIONS

1:30 – 2:30 PM

Employee Involvement in Safety Programs [1] *Waconia 3*



PRESENTER: Mark Friske, *CSP, EHS Manager, The Sherwin-Williams Company, Minneapolis, MN*

Are your employees looking to become involved in your company's safety programs but aren't quite sure how they can be involved? Come to this session to hear about the many ways employees can become involved in safety at your company as presented by a MNSTAR recognized worksite with high employee involvement.

Excavation/Trench Safety [2] *Outdoor Demo North Parking Lot/Chaska*



PRESENTERS: Cory Weston, *ASP, Cit, Customized Training Representative, South Central College, North Mankato, MN*; and Shawn Evans, *Adjunct Customized Training Representative, South Central College, Faribault, MN*

Quality hands-on training teaches students how to work safely in and around an excavation environment. Practice installing shielding and shoring systems without the hazard of a live trench. Attendees will have the opportunity to view and install multiple types of safety systems, including: Timber Screw Jack Shoring, Aluminum Hydraulic Shoring, Build-A-Box, Pneumatic Shoring, and Inflatable "Trench Box".

From Pain to Productivity: How Ergonomic Programs Improve Decision Making [1] *Winona*



PRESENTERS: Kylie Vathauer, *MS, MPH, ACSM-EP, CPH; Loss Control Specialist, Kraus Anderson Insurance, Burnsville, MN*; and Melissa Gill, *Owner/CEO On-site Solutions, Maple Grove, MN*

Pain fogs the mind and can lead to decisions that put us at risk. Ergonomic programs can impact a safety culture for more than preventing a strain or sprain. These programs have the opportunity to improve productivity and mental health.

Implementing a Naloxone Voluntary Use Program [2] *Anoka 3*



PRESENTER: Chad Gangelhoff, *Workplace Safety Supervisor, Hennepin County Human Resources, Minneapolis, MN*

In this presentation, we will discuss a bold and innovative initiative we implemented in the public sector: a Naloxone Voluntary Use Program. This program was designed for employees who typically do not have naloxone administration as part of their

job duties (e.g., healthcare workers, law enforcement, security staff). By securing commitment and buy-in from multiple departments and county administration/commissioners, we were able to roll out a program aimed at making naloxone more widely available to staff. This decision came in response to concerns raised by employees encountering individuals who had overdosed while working in public spaces such as libraries and service centers. Our goal is to share the step-by-step process we followed to implement this program, highlighting the challenges we faced, and the life-saving outcomes achieved. This project is a great example of executing a program with a fast turnaround, under pressing circumstances. Additionally, we want to demonstrate how this model can be adapted by other organizations. We'll also cover the policy we created, the project implementation team that utilized IT resources and logistics, and the development of an in-house training program.

Lifesaving Tips When Facing an Armed Intruder or Active Shooter [2] *Owatonna*



PRESENTER: Ted Hayes, *Security Consultant, CSP, M3 Insurance, Wausau, WI*

Statistics indicate that more than 60% of active shooter situations are over within five minutes. Knowing exactly what to do during those few minutes may mean the difference between life and death. Whether your company uses Run-Hide-Fight, Lockdown, Evacuation, or other crisis action protocols, this program will equip you with proven, ready to implement security measures including the use of the 'Room Security Controls' handout to streamline your immediate crisis response protocols.

Stop, Collaborate and Listen: Improving Safety Outcomes with Teamwork [2] *Waconia 5*



PRESENTER: Tim Page-Bottorff, *CSP, CIT, Senior Safety Consultant, SafeStart, Mesa, AZ*

Safety is a goal best achieved with teamwork, and that requires workers and supervisors to stop, collaborate and listen. This session is about turning a bunch of individuals into a proper team. Learn to employ leadership skills that can improve your safety culture and see how collaboration makes safety happen.

The OSHA Indiana Jones' — Expert Tips and Tricks for Finding OSHA information [1] *Anoka 1-2*



PRESENTER: Todd Loushine, *PhD, PE, CSP, CIH, University of Wisconsin-Whitewater, Whitewater, WI*

"OSHA Update" sessions are always popular, but what if you could find and review the same information provided to OSHA compliance officers? Todd is a former CSHO and has since built successful career after OSHA. Bring your questions and be prepared to be amazed by the information you can find on your own when you know where to look and how to search.

EXPERIENCE LEVELS:

- [1] FUNDAMENTAL
- [2] INTERMEDIATE
- [3] ADVANCED

MONDAY, MAY 5

EXHIBIT HALLS

•••• OPEN ••••

8:00 AM – 3:30 PM

BREAKOUT SESSIONS

2:30 – 3:30 PM



3:30 – 4:30 PM

Construction Safety Best Practices — The Case for Safety Excellence [2] *Winona*



PRESENTER: Stacy Arnold, *Director of Safety and CHASE, AGC of Minnesota, St. Paul, MN*

Construction industry has a history of being slow to change, OSHA rulemaking process takes an average of 7 years. The only factor that consistently seems to be moving fast, is schedules, which can have an inverse effect on Safety. As Director of a Construction

Health and Safety Excellence (CHASE) program, I evaluate some of Minnesota’s safest contractors, walk their job sites, audit their programs. I will share parameters that the AGC currently uses to define our “Best in Class” contractors, and engage in a discussion to share best practices, with evidence of the benefit to raising the bar.

Driving Safely Through the Years — Seasoned Drivers [All] *Anoka 3*



PRESENTER: Joan Somes, *PhD, RN-BC, FAEN, Emergency Nurses Association, Apple Valley, MN*

As we age, physical and cognitive changes that can affect driving take place in all employees. Most change will occur in “seasoned” employees! This session will describe these changes and provide useful resources that can be used as an injury prevention and safe driving program for seasoned and all employees.

Integrating Safety Into Your Organization [2] *Waconia 5*



PRESENTER: Chris Seider, *CSP, PHR, CHST, ARM, Director of Health and Safety, Foth, De Pere, WI*

One of the most common mistakes safety professionals often make is thinking they can take sole responsibility for safety within their organizations. This approach is not only unrealistic, but ultimately unfair to the organization. This session will discuss ways to integrate safety into the key operational areas of your organization.

MN OSHA Update [All] *Waconia 3*



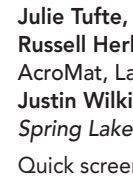
PRESENTERS: Ryan Nosan, *Director, MNOSHA Workplace Safety Consultation*; Ron Anderson, *Director of Health*; and Matt Lucas, *Director of Safety, MN OSHA, MN Department of Labor and Industry, St. Paul, MN*

This session will provide clarification on a variety of safety/health issues as they relate to Minnesota-specific enforcement programs and initiatives, including: rule-making efforts (e.g. ergonomics, heat-stress, hazard communication/GHS); inspection/citation statistics; emphasis programs; and grant programs.

Quick Screens: A Roadmap to Sprain/Strain Solutions [1] *Chaska*



PRESENTERS: Beth Mayotte, *OTR/L, CIEE, Owner, ErgoWorks, Apple Valley, MN*; Scott Gesinger, *MEHS, CSP, J&B Group, St. Michael, MN*;



Julie Tufte, *CSP, TKDA, St. Paul, MN*; Russell Herbert, *Founder, AcroMat, Lakeville, MN*; Justin Wilkins, *CSP, Highpoint EHS, Spring Lake Park, MN*

Quick screens are checklist style observation tools that can be used by anyone and provide a starting point to reducing sprain/strain injuries. This session will present some examples of Quick Screens, presented by safety professionals who use them. Five Quick Screen checklists will be provided to all attendees.

FIND US ON SOCIAL MEDIA



#MNSAFETY2025



EXPERIENCE LEVELS:

- [1] FUNDAMENTAL
- [2] INTERMEDIATE
- [3] ADVANCED

EXHIBIT HALLS

•••• OPEN ••••

8:00 AM – 3:30 PM

BREAKOUT SESSIONS

3:30 – 4:30 PM

Safety Board of Directors: The New Safety Committee [1] Anoka 1-2



PRESENTER: Lindsey Kuefler, CSP, EHS Manager, The Toro Company, Shakopee, MN

Do you struggle to keep your safety committee members engaged? Do you dread going to the meetings? The Toro Company created the Safety Board of Directors to drive engagement, learning, and action into each and every safety team meeting.

Training Outside the Box [1] Owatonna



PRESENTER: Marnee McCormick, CHST, Instructor, Minnesota North Colleges, Hibbing, MN

Safety training is not always the most exciting training topic. Refresh your training curriculum with new ideas for engagement and retention. Quizzes, games, and videos for in-person and Zoom training.



4:30 – 6:30 PM | PRE-FUNCTION AREA

NETWORKING RECEPTION

Join us after a full day of educational sessions for the Minnesota Safety Council Networking Reception! Relax and enjoy delicious hors d'oeuvres, a cash bar, entertainment and the opportunity to connect with other conference attendees, exhibitors and the Minnesota Safety Council team.



TUESDAY, MAY 6



OPENING SESSION & AWARDS

7:30 – 9:00 AM | MYSTIC SHOWROOM

KEYNOTE: BUILDING A BETTER TOMORROW: THE FUTURE OF SAFETY AND HEALTH



PRESENTER: Jason Kunz, *The Kunz Company LLC*

In an era of rapid transformation, the safety profession stands at a crossroads. The call for change has never been more urgent, but the key to unlocking a brighter future lies in the heart of effective leadership. Your leadership. Join us for an energizing keynote that challenges norms and inspires a focus on where we need to go, rather than an emphasis on what's in the way. This session is an invitation to move beyond traditional approaches and cultivate environments that empower every team member from the front office to the frontline to take ownership and contribute to your company's success. With compelling stories and cutting-edge research, we will highlight how your leadership can drive a shift in both mindset and practice. As we spotlight strategies rooted in Human and Organizational Performance (H&OP), you'll discover how fostering a culture of collaboration, engagement, and transparency can drive retention, mitigate risk, and advance your operations. This isn't merely a presentation, it's an invitation to action, a glimpse into the future. A future that sees people not as they are, but as they could be, one that meets people where they're at, then does the hard work to send them home better...

GOVERNOR'S WORKPLACE SAFETY AWARDS

The Governor's Workplace Safety Awards Program has been honoring Minnesota workplaces for excellence in safety since 1934. Join us as we recognize this year's recipients who have achieved outstanding results in safety.

EXPERIENCE LEVELS:

- [1] FUNDAMENTAL
- [2] INTERMEDIATE
- [3] ADVANCED

TUESDAY, MAY 6

EXHIBIT HALLS

•••• OPEN ••••

8:00 AM – 3:00 PM

BREAKOUT SESSIONS

10:00 – 11:00 AM

Building Effective Safety Committees [2] Waconia 3



PRESENTER: Chris Seider, CSP, PHR, CHST, ARM, Director of Health and Safety, Foth, De Pere, WI

As a safety leader, one of the best things we can do for our organizations is build strong supporting teams with diverse representation and focus. One team that has proven to be effective in building sustainable safety cultures are Safety Committees.

This session will discuss best practices in creating and leading an effective safety committee.

Confined Space Entry [1] Outdoor Demo North Parking Lot/Chaska



PRESENTER: Dan Corrigan, Owner, First Response Fire and Safety, Apple Valley, MN

Many hazards exist in confined space entry, but the most dangerous situation is employers/employees not even realizing they are entering and working in one. This demonstration will utilize a confined space training trailer to show a vertical and a horizontal confined space entry. We will show you how to recognize confined spaces, the difference between permit required and non-permit required confined spaces, the permit process, atmospheric monitoring, hazard evaluation, non-entry rescue, and many other related topics that will assist you in making your employees more aware and much safer in these situations.

Focus Four for Health: An Initiative to Address Construction Health Hazards [1] Anoka 3



PRESENTER: Janet L. Keyes, CIH, FAIHA, CHESS, Inc., West St. Paul, MN

Health hazards in construction are often overlooked, even though they are estimated to cause ten times as many fatal occupational illnesses compared with fatal occupational injuries. This session will introduce a free resource created by AIHA, Focus Four for Health, to help construction people begin to address these health hazards.

Getting Started with Leading Indicators [2] Owatonna



PRESENTER: JoAnn Dankert, CSP, CHMM, CIT, Consultant, Phoenix, AZ

The discussion of leading indicators has been around for the past 30 years, yet many organizations have not transitioned to using them to improve overall S&H at their organizations. This session will define what leading indicators are and determine what's needed to get started, how to sell this change in S&H measurement to leadership and developing leading indicators that work.

I am NEW to Safety! Now What? [1] Anoka 1-2



MODERATOR: Terry Larson, GSP, Workplace Safety Director, Minnesota Safety Council, St. Paul, MN; **PRESENTERS:** TBA

Starting out in safety can seem daunting as there is so much to learn about your workplace, the hazards, and risks your workers face so you can help improve your safety and health program. How do you prepare yourself for succeeding in the field of safety? We're bringing together a panel of experienced safety professionals to help answer your questions and address some key hard and soft skills that can benefit professional learning and self-improvement in order to succeed in your profession.

Road to Self-Care: Mental Health, Fatigue and Driving [All] Winona



PRESENTER: Lisa Kons, Traffic Program and Advocacy Director, Minnesota Safety Council and Minnesota Network of Employers for Traffic Safety, St. Paul, MN

Drivers experiencing strong emotional agitation (sadness, anger, anxiety, etc.) are 9.8 times more likely to be involved in a crash. Stressed drivers accelerate and brake more frequently and intensively than other drivers — they also often drive at high speed, overtake other vehicles, and don't stop at crosswalks. This session will review how caring and taking time for your mental health and sleep can keep you and your employees safe on the road.

The Leadership Blueprint: Moving from Idea to Implementation [All] Waconia 5



PRESENTER: Jason Kunz, The Kunz Company LLC, Apply Valley, MN

This breakout will unpack the current and future state of safety and health, with an emphasis on equipping attendees with actionable insights to lead their organizations through change and prepare for the challenges ahead. We will further explore the trends reshaping the safety landscape, discuss how these factors present both new opportunities and unique challenges, and deliver concrete tools to answer what's likely on your mind: "Where do I go from here? This breakout session is more than a conversation — it's your roadmap to success, offering strategies that are immediately applicable, whether you're a frontline leader, emerging EHS professional, or seasoned executive. Join us to unlock proven practices that will prepare you to lead your team and organization into the future.

EXPERIENCE LEVELS:

- [1] FUNDAMENTAL
- [2] INTERMEDIATE
- [3] ADVANCED

EXHIBIT HALLS

•••• OPEN ••••

8:00 AM – 3:00 PM

BREAKOUT SESSIONS

11:15 AM – 12:15 PM

Better Workers' Compensation Claim Outcomes [2] Owatonna



PRESENTERS: Nancy Bendickson, CDS, CSP, ARM, ALCM, Managing Consultant, Aon – Minnesota and Christina Bergman, CWCP, CHRS, Managing Consultant, Aon – Minnesota

Being responsible for workplace injury prevention and claim management

is challenging. This is compounded by the need to balance the multiple interests of 3rd parties (e.g., insurance company, medical professionals, plaintiff attorney, regulatory authorities), as well as the business needs (e.g., operational demands related to staffing, productivity, expense control). In this session participants will hear about strategies and tactics that when executed have proven results contributing to the control and mitigation of workers' compensation claim costs. The importance of benchmarking injury and claim management performance will also be shared as this is a foundational aspect of achieving the desired outcomes.

Emergency Recognition & Response In The Workplace [1] Winona



PRESENTER: Adam Theisen, First Aid Program Manager, Minnesota Safety Council, St. Paul, MN

Is your organization ready to recognize and respond to the three primary types of workplace emergencies: medical situations; mental health crises; and substance misuse/overdoses including NARCAN/Naloxone administration? Join this session for strategies on early recognition and response actions.

Heat Stress: The Often-Over-Looked Safety Hazard [3] Waconia 3



PRESENTER: Garry Kroft, MS in Safety, CSP, S&N Consulting, Maple Grove, MN

Ask any Superintendent of a construction project if they have ever witnessed a work-related fatality on their jobsite. I have, and surprisingly too often the answer is Yes. Asked the cause, again surprisingly, the answer is heat stress. With all the safety topics

companies traditionally cover during training, too often heat stress gets put on the back burner (no pun intended). Please join in the conversation concerning this often-over-looked hazard — heat stress.

11:15 AM – 12:45 PM

Contractors as Family: It Can Be Done! [3] Anoka 3



PRESENTER: Cory Chan, Safety Coordinator, Cardinal IG, Minneapolis, MN

"Contractors are a necessary evil..." Talk about a short-sighted & ineffective approach. Learn to onboard new contractors as teammates and "reel in" relationships with vital contractors. It can be done, really, as one big happy, productive, occasionally dysfunctional family!

Generational Motivation: How To Motivate Different Generations To Build a Strong Safety Culture [2] Waconia 5



PRESENTER: Michael Grajeda, Director of Health and Safety, Southview Design, St. Paul MN

This presentation will discuss the different types of motivation each generation needs to build a strong safety culture.

Plan, Practice, Prevail: Enhancing Your Emergency Restoration Readiness [2] Chaska



PRESENTER: Lisa Tickhill, Certified Loss Control Professional, Safety Compliance Coordinator, STAR Energy Services, Alexandria, MN

In today's unpredictable environment, having an effective emergency restoration plan is crucial for businesses. However, a plan is only as good as its execution. Regularly exercising and refining your plan can significantly enhance your organization's resilience during crises.



FIND US ON SOCIAL MEDIA



#MNSAFETY2025



EXPERIENCE LEVELS:

- [1] FUNDAMENTAL
- [2] INTERMEDIATE
- [3] ADVANCED

TUESDAY, MAY 6

EXHIBIT HALLS

•••• OPEN ••••

8:00 AM – 3:00 PM

BREAKOUT SESSIONS

11:15 AM – 12:45 PM

Stay on Top of your Lockout/Tagout Program [2] Anoka 1-2



PRESENTER: Cynthia E. Braun, CSP, SMS, CHMM, CIT, Paralegal, President, Braun Safety Associates, LLC, Littleton, CO

Brave question....have you reviewed your lockout/tagout program lately? OSHA requires employers to conduct an annual audit ("periodic inspection") to ensure that your energy control program meets regulatory requirements and that employees are following procedures. Without annual/periodic inspections, your company is vulnerable to non-compliance citations, worker injuries, and inconsistencies in program execution! This session is ideal for persons with intermediate/advanced knowledge of the OSHA lockout/tagout regulations and procedures, including safety managers, authorized employees, supervisors of authorized employees, employees who maintain facility/field equipment, and personnel who design/engineer or purchase machinery/equipment.

From Fatigue to Flourishing [1] Anoka 3



PRESENTER: Sara Jackson, Flipside Mind LLC, Eagan, MN

In 2023, Germany picked "Crisis Mode" as its word of the year and we've all felt it. A pandemic, constant change, demands on systems and resources have forced us to flex and adapt and we are all trying to keep the plates spinning. But we know this isn't sustainable. It is up to each of us to take pause and chart a new course towards flourishing rather than fatigue. In this session we will: understand the symptoms of compassion fatigue; explore the 4 well-being indicators: Self-Regard, Self-Actualization, Optimism and Interpersonal Relationships; learn emotional intelligence strategies to take back control; examine the dimensions of trust; identify areas for growth and development.

Human and Organizational Performance (HOP) — Serious Injury and Fatality Discussions Pt. 1: Overview of HOP and Best Practices [All] Anoka 1-2



MODERATOR: Paul Aasen, CEO, Minnesota Safety Council, St. Paul, MN; **PRESENTERS:** TBA

Join this extended session dedicated to the topic of Human and Organizational Performance (HOP). This session brings together leading organizations from right here in Minnesota who have been on the forefront of this discussion and practice. Panelists will share and discuss the most recent innovations, and trends around this growing topic. It will also share how organizations of all sizes can put HOP principles into practice in your organization.

12:15 – 1:30 PM



Keeping Workers Safe — The First 90 Days [2] Waconia 3



PRESENTER: Larry Pearlman, BBA, MA, Senior Safety Consultant, SafeStart, Wake Forest, NC

The first 90 days of employment are the most dangerous. Discover techniques that set the tone for safety during onboarding, and learn to integrate them with your organization's culture so that new hires are more engaged and focused on safety.

1:30 – 2:30 PM

AI in Workplace Safety: Innovations, Applications and Best Practices [2] Waconia 5



PRESENTER: Rana DeBoer, Volt Strategy, Sioux Falls, SD

Explore the impact of artificial intelligence on workplace safety in this session. Rana will delve into what we know about using AI technologies in the workplace and share examples and insights, the latest AI applications that enhance safety protocols, streamline compliance, and create safer work environments. This session will be an interactive opportunity to share and learn from others in your profession.

Machine Guarding Basics — How to Assess Your Facility [1] Winona



PRESENTER: Amber Vandersnick, EH&S Manager, Larson Manufacturing, Brookings, SD

Machine guarding is the first line of defense against worker injuries caused by points of operation or machine movement. Machinery must have adequate safeguards to protect operators from the hazards created by moving machine parts and from any sparks, chips, splashes, etc. that are created during operation. This session will help attendees understand the hazards and potential injuries associated with operating machinery. It will also cover safeguards and how to follow proper operating instructions.

EXPERIENCE LEVELS:

- [1] FUNDAMENTAL
- [2] INTERMEDIATE
- [3] ADVANCED

TUESDAY, MAY 6

EXHIBIT HALLS

•••• OPEN ••••

8:00 AM – 3:00 PM

BREAKOUT SESSIONS

1:30 – 2:30 PM

Reasonable Suspicion Training Pt. 1 [All] Owatonna



PRESENTER: Bryan D. Schafer, *Minnesota Safety Council, St. Paul MN*

(Must also attend Pt.2 for Certificate) Reasonable Suspicion Training is designed to equip supervisors and managers with the knowledge and skills needed to recognize, address, and document potential substance abuse in the workplace. This training covers essential topics, including how to observe and identify signs of concern, such as changes in attendance, habits, and behavior, using real-life scenarios. Participants will learn empathetic techniques for addressing issues and conducting interviews, strategies to reduce incidents and absenteeism, and best practices for documenting suspicions to mitigate legal risks. The program also provides guidance on authorizing and performing reasonable suspicion tests when necessary and offering support resources to employees. By completing this training, leaders will be prepared to handle these challenging situations effectively, fostering a safer and more productive work environment.

The 101's on NFPA 70E Standard and The Changes in 2024 [1] Chaska



PRESENTER: Kam Alipour, *Regional Manager of Protective Apparel, Cintas Corporation, Maple Grove, MN*

We will explore NFPA 70E from a 101 viewpoint and learn some of the best practices around, key changes over the years, who is responsible for what, the difference in FR and AR along with proper selection and care and much more! After this session you should have a good working knowledge of what your Electrical Safety Program should have in it when it comes to PPE, clothing and training requirements and also learn of any possible gaps in your current program so you can start filling them.

2:30 – 3:00 PM



3:15 – 4:15 PM

Behavioral Health and Resilience in the Workplace [1] Chaska



PRESENTERS: Travis Quinlan, *MSW, LICSW, Director of Psychological Health (DPH), Minnesota Army National Guard – Medical Detachment* and Kristy Farley, *MSW, LICSW, Psychological Health Coordinator (PHC), Minnesota Army National Guard – Medical Detachment*

From the perspective of two MN Army National Guard behavioral health providers, this session will focus on strategies of positive communication that can assist with enhancing working relationships and overall mental wellness for individuals, teams, and organizations.

Don't Just Check the S&H Training Box: How To Use AI and Neurodiversity To Make Training Better [2] Winona



PRESENTER: JoAnn Dankert, *CSP, CHMM, CIT, Consultant, Phoenix, AZ*

We've heard a lot about AI but how can we use this to help us improve our S&H processes? And what's neurodiversity? This session will discuss ways to apply both these concepts to improve S&H training. Define what AI is and what neurodiversity is; discuss current AI technology and applications and review how to apply neurodiversity principles to S&H training.

Emergency Action Plan — Is Your Facility Compliant? [1] Waconia 3



PRESENTER: Amber Vandersnick, *EH&S Manager, Larson Manufacturing, Brookings, SD*

An emergency action plan (EAP) is required by particular OSHA standards. This session will cover: basic requirements for an emergency action plan; employer responsibilities and training requirements; required drills and documentation; and discussion of action plans for the most common emergencies and fire prevention plans, fire detection, and fire extinguisher requirements.

#MNSAFETY2025

FIND US ON SOCIAL MEDIA

EXPERIENCE LEVELS:

- [1] FUNDAMENTAL
- [2] INTERMEDIATE
- [3] ADVANCED

TUESDAY, MAY 6

EXHIBIT HALLS

•••• OPEN ••••

8:00 AM – 3:00 PM

BREAKOUT SESSIONS

3:15 – 4:15 PM

Human and Organizational Performance (HOP) — Serious Injury and Fatality Discussions Pt. 2: How to implement HOP Principles into Your Organization [All] Anoka 1–2



MODERATOR: Paul Aasen, CEO, Minnesota Safety Council, St. Paul, MN; **PRESENTERS:** TBA

Join this extended session dedicated to the topic of Human and Organizational Performance (HOP). This session brings together leading organizations from right here in Minnesota who have been on the forefront of this discussion and practice. Panelists will share and discuss the most recent innovations, and trends around this growing topic. It will also share how organizations of all sizes can put HOP principles into practice in your organization.

Magic: From Walk-Through Inspection to Management Recommendations [2] Waconia 5



PRESENTER: George Gruetzmacher, PhD, CIH, CSP, PE, Industrial Hygiene Engineer/Scientist, WI State Laboratory of Hygiene, Madison, WI

How often do you keep finding the same deficiencies time and time again. You find it, fix it, and next week it's back. How can we find the underlying reason that the problem exists, and how can we communicate to management a plan to address that root cause? Starting with the list of deficiencies from a walkaround inspection, the list can be analyzed until they key management functions impeding progress can be identified. Now we can work with management to really make safety improvements.

Reasonable Suspicion Training Pt. 2 [All] Owatonna



PRESENTER: Bryan D. Schafer, Minnesota Safety Council, St. Paul, MN

(Must also attend Pt.1 for Certificate) Reasonable Suspicion Training is designed to equip supervisors and managers with the knowledge and skills needed to recognize, address, and document potential substance abuse in the workplace. This training covers essential topics, including how to observe and identify signs of concern, such as changes in attendance, habits, and behavior, using real-life scenarios. Participants will learn empathetic techniques for addressing issues and conducting interviews, strategies to reduce incidents and absenteeism, and best practices for documenting suspicions to mitigate legal risks. The program also provides guidance on authorizing and performing reasonable suspicion tests when necessary and offering support resources to employees. By completing this training, leaders will be prepared to handle these challenging situations effectively, fostering a safer and more productive work environment.

Sampling Success: Navigating the Pitfalls of Industrial Hygiene Sampling [2] Anoka 3



PRESENTER: Scott D. Norman, CIH, CSP, President/Principal Consultant, Norman Safety & Health Consulting LLC, St. Paul, MN

Collecting industrial hygiene samples seems simple. However, sometimes you don't know what you don't know. This presentation will help attendees avoid mistakes and pitfalls by discussing the recognized best practices followed by Certified Industrial Hygienists (CIHs) to ensure industrial hygiene samples are accurate and defensible.



2025 REGIONAL SAFETY DAYS

SAVE THE DATE!

September 9 | Bemidji
NORTHWEST REGIONAL SAFETY DAY
SouthShore Hotel on Lake Bemidji

September 30 | Duluth
NORTHEAST REGIONAL SAFETY DAY
Duluth Entertainment Convention Center

October 28 | Mankato
SOUTHERN REGIONAL SAFETY DAY
Mayo Clinic Health System Event Center

PROFESSIONAL DEVELOPMENT COURSES

WEDNESDAY, MAY 7, 2025 | MYSTIC LAKE CENTER

HALF-DAY COURSES | 8:00 AM – 12:00 PM

Fundamentals of Safety Management Systems Winona 1



PRESENTER: Cindy Braun, CSP, SMS, CHMM, CIT, Paralegal, Braun Safety Associates, LLC, Littleton, CO

Keep your eyes on the prize with this class! Get a clear vision of safety management systems and to help your organization move beyond traditional safety programs. The safety professional must be “systems thinking” to help employers advance and thrive. Traditional safety programs tend to rely on compliance, training, and a safety director to manage risk. This session helps safety professionals identify current program strengths, while learning what it takes to move to a comprehensive, structured safety management system (SMS).

Interpreting Industrial Hygiene Sampling Reports Owatonna 3



PRESENTER: George Gruetzmacher, PhD, CIH, CSP, PE, Industrial Hygiene Engineer/Scientist, WI State Laboratory of Hygiene, Madison, WI

Industrial hygiene can be confusing, but it doesn't have to be. What does it mean to make an exposure assessment? How can we make intelligent decisions from sampling results?

Designed for non-IHs, this course will walk you through the AIHA exposure assessment strategy and help you understand and interpret the results from IH reports. Free tools and training programs will be presented as well.

FULL-DAY COURSES | 8:30 AM – 4:00 PM

Aerial Lifts (MEWPs): Fundamentals for the Trainer Anoka 3



PRESENTER: Dave Sublette, MS, CSP, Corporate Director of Safety, Abhe & Svoboda, Inc., Jordan, MN

In both general industry and construction, OSHA requires operators to be trained before using any mobile elevated work platform (MEWP), with ANSI specifying that trainers be “qualified.” This course is designed for trainers, managers, superintendents, supervisors, foremen, and safety personnel to understand design, loading principles, standards, and trainer responsibilities.

Forklifts & Other PITs: Fundamentals for the Trainer Owatonna 2



PRESENTER: Terry Larson, GSP, Workplace Safety Director, Minnesota Safety Council, St. Paul, MN

In both general industry and construction, OSHA requires operators to be trained and evaluated before using any powered industrial truck (PIT), with training conducted by someone with the knowledge and experience to assess competence. This course is for trainers, managers, superintendents, supervisors, foremen, and safety personnel to understand design, loading principles, standards, and trainer responsibilities.

Overhead Hoist & Rigging Basics — General Industry Anoka 2



PRESENTER: Trent Koppes, Occupational Safety & Health Manager, South Dakota Safety Council, Sioux Falls, SD

In manufacturing and construction, moving heavy loads with cranes and hoists poses risks. OSHA's regulations for overhead cranes and slings help minimize these hazards. This workshop covers crane and sling terminology, safe sling operations, recordkeeping, inspection types, and best practices for cranes and hoists.

Risk Assessment Workshop Owatonna 1



PRESENTER: JoAnn Dankert, CSP, CHMM, CIT, Consultant, Phoenix, AZ

The Risk Assessment Workshop, part of the NSC Advanced Safety Certificate series, is focused on prioritizing safety efforts and assessing performance beyond incident rates. Using case studies, participants will practice techniques, and receive forms and templates to address their organization's specific needs.

Safe Electrical Work Practices — NFPA 70E Anoka 1



PRESENTER: Ben Wood, JD, MS, CSP, Occupational Safety Manager, Minnesota Safety Council, St. Paul, MN

Did you know that a series of protections must be in place before any work is done on energized conductors? This course is designed for qualified personnel (electricians, technicians, maintenance), supervisors, and safety staff to understand safe practices for working on energized electrical conductors, including testing and troubleshooting. It covers OSHA and NFPA 70E standards, updates under NFPA 70E – 2024, and helps organizations implement and maintain a “Safe Electrical Work Practices” program.

PROFESSIONAL DEVELOPMENT COURSES

WEDNESDAY, MAY 7, 2025 | MYSTIC LAKE CENTER

Waconia 3

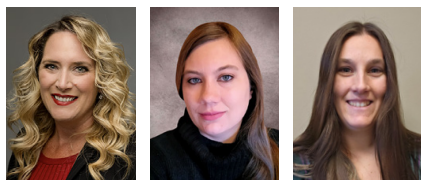
EMERGING SAFETY PROFESSIONALS (ESP) FULL-DAY PROGRAM | 8:00 AM – 3:30 PM

Calling All Aspiring Safety Professionals!

The MSC Emerging Safety Professionals (ESP) Group, is celebrating its growth with an exclusive development day just for you! After this year's conference, dive into a specially curated agenda designed to equip you with the latest knowledge, tools and resources you need to succeed in your safety career. Whether you're just starting out or ready to expand your expertise, this is an event you won't want to miss!

8:00 AM | REGISTRATION

8:00 – 8:15 AM | Welcome & Introductions



PRESENTERS: Renee Molstad, CAE, Membership and Business Development Manager, Minnesota Safety Council, St. Paul, MN; Lexie Neff, CSP, Health, Safety & Environmental Coordinator, ISD 709 Duluth Public Schools, Duluth, MN; Amanda Edberg, CSP, Senior Account Manager, EHS Division, IEA, Inc., Brooklyn Park, MN

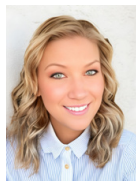
8:15 – 9:15 AM | Transformational Communication: Making Difficult Conversations Easy



PRESENTER: Ryan Bouda, Professional Development Specialist, Your Leap Team, Phoenix, AZ

This session provides leaders with tools to handle tough conversations confidently, covering key steps like clarifying outcomes and overcoming barriers. Focused on policy adherence, risk management, and accountability, attendees will gain skills to build trust, foster collaboration, and resolve challenges in a safe, respectful work environment.

9:15 – 10:15 AM | Leading the Whole Person: Maximizing Employee Engagement and Performance



PRESENTER: Sara Jackson, Owner-Facilitator-Consultant, Flipside Mind LLC, St. Paul, MN

A caring leader builds strong relationships by understanding the whole person—mind, body, spirit, and emotions. This session explores how personal values, beliefs, personality, life stages, and generational influences shape team dynamics in the workplace.

10:15 – 10:30 AM | BREAK

10:30 AM – 12:00 PM | Panel Discussion: The Future of Workplace Safety — Innovations, Compliance and Employee Well-Being



PRESENTERS: Spencer Moore, Senior Vice President of Workforce Safety & Business Development at Becklar Workforce Safety, Ogden, UT; Rana DeBoer, Transformational Culture Strategist, VOLT Talent Strategy, Sioux Falls, SD; Amber Illies, CIH, Senior Health and Safety Manager, Seagate Technology, Bloomington, MN



As technology reshapes workplace safety, organizations must balance innovation, compliance, and employee well-being to create secure, productive environments. This expert panel will explore how AI, IoT, and digital PPE can protect workers and foster well-being. We will explore connected safety solutions, compliance insights and integrating well-being with safety, as well as best practices and actionable strategies for building safer, healthier workplaces in today's evolving world.



12:00 – 1:00 PM | LUNCH

1:00 – 3:30 PM | Malting Plant Facility Tour



RahrBSG

LOCATION:

Rahr Malting Co;
800 1st Ave W, Shakopee, MN 55379

Rahr Malting welcomes you for an inside look at their malting process. Below are some important details to ensure your visit goes smoothly:

- Please wear closed-toe shoes during the tour.
- Depending on the weather, areas inside the facility may be dirty, dusty or muddy. Please dress accordingly.
- The tour will involve walking up/down stairs and covering at least one mile. The plant is an industrial environment, so be prepared for the physical demands.





HELPING MAKE LIFE SAFER

We offer a full range of resources to support workplace safety programs!

- MSC Member Discounts
- Trainer and Competent Person Training
- OSHA/DOT Compliance Assistance, Safety Audits, Consulting
- Recovery Friendly Workplace FREE Reasonable Suspicion Training
- First Aid/CPR/AED Certification
- Mental Health First Aid Certification
- Training Customized for Your Organization



**MINNESOTA
SAFETY COUNCIL**
CHAPTER OF **ns**c

**ISANTI EXHIBIT HALL
BOOTH 623/624
DROP OFF DOOR PRIZE TICKETS!**



474 Concordia Ave, St. Paul, MN 55103
651-291-9150 · MinnesotaSafetyCouncil.org



EXHIBIT HALLS & EXHIBITORS

MINNETONKA & ISANTI EXHIBIT HALLS
MONDAY 8:00 AM – 3:30 PM | TUESDAY 8:00 AM – 3:00 PM

Don't Forget to Visit our Vendors!

- **You'll find more than 115 exhibitors — all in one place! — with practical, economical solutions to make your safety program more effective.** See page 28 for Exhibitors A–Z.
- **Stop at the Minnesota Safety Council Booth (623/624).** Meet our staff, check out training options, tools and much more!
- **Visit the refreshment stations Monday and Tuesday.** They are a great place to find a snack — and to connect with LOTS of friendly folks just like you!
- **Win Door Prizes!** Drawings after lunch for first-class door prizes. If you register for the conference, you're eligible to win!

MINNETONKA & ISANTI EXHIBIT HALLS

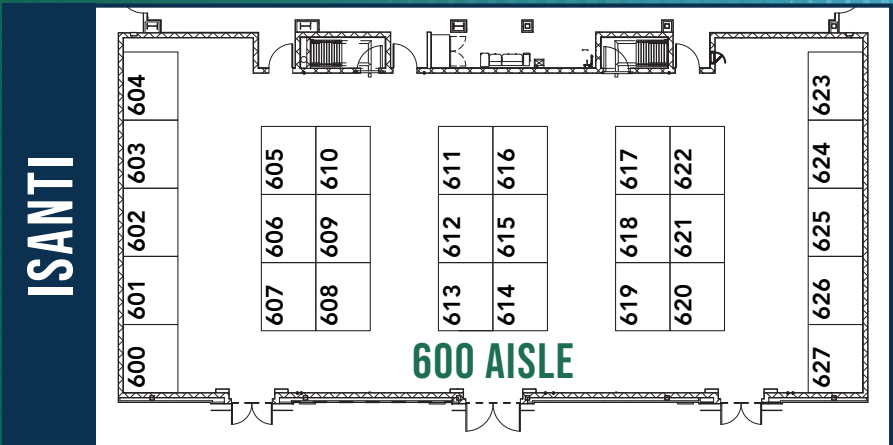
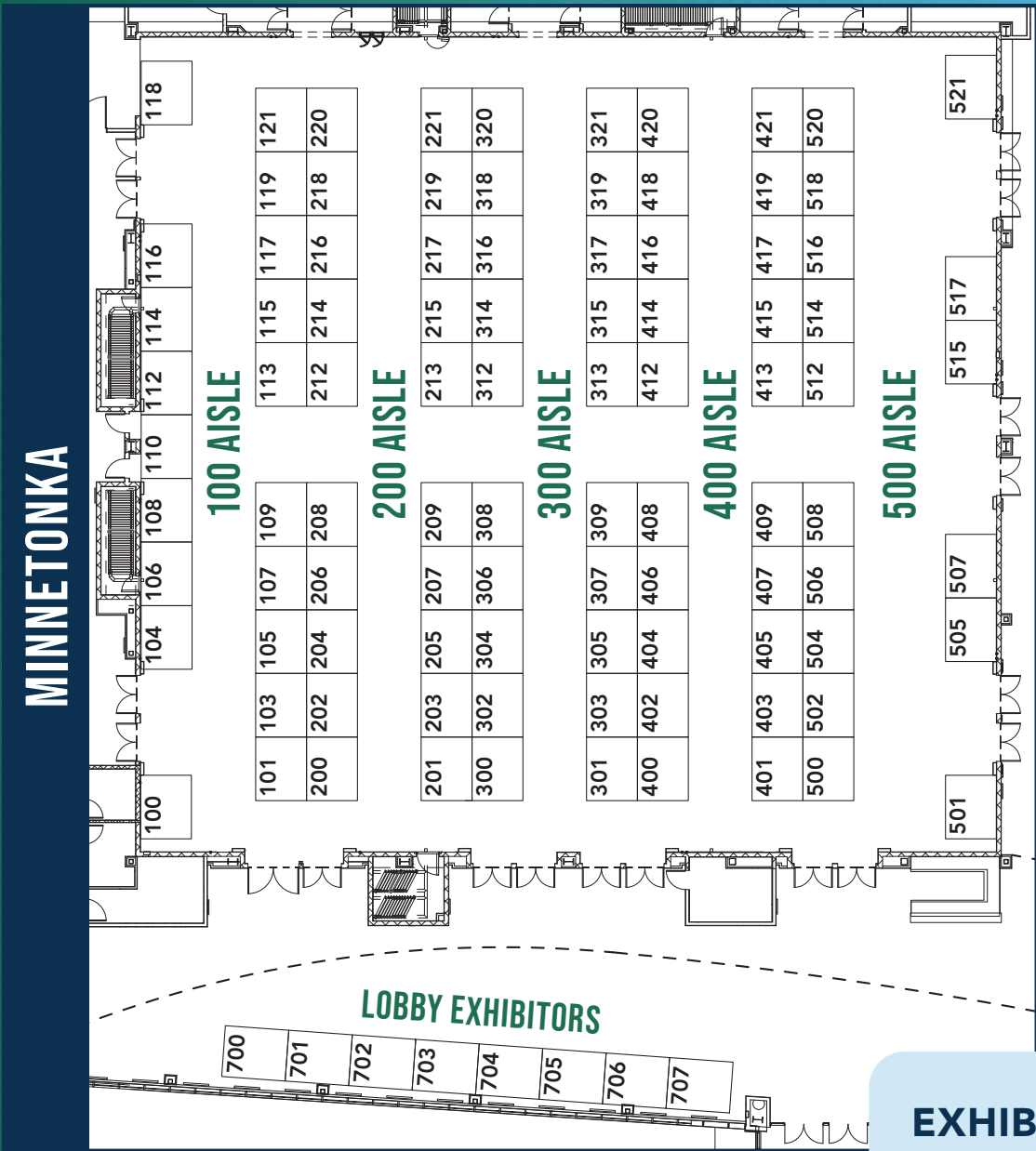


EXHIBIT HALLS OPEN

MONDAY
8:00 AM – 3:30 PM

TUESDAY
8:00 AM – 3:00 PM

EXHIBITORS A-Z

EXHIBITOR	BOOTH	EXHIBITOR	BOOTH	EXHIBITOR	BOOTH
Access Safety Specialists	100	IEA, Inc.*	414	RAECO Rents LLC	317
ActivePure Technologies	306	Innovative Office Solutions	604	R.C. Bremer Marketing Associates	515/517
Active Release Techniques	113/212	ISK Industries	601	Red Wing Shoe Company*	505/507
Airgas	405/407	Kenwood/WS Communications	301	RefrigiWear	117
ALS Environmental	220	Keystone Treatment Center	606	RESA Power Service*	501
American Society of Safety Professionals (ASSP) NW Chapter	404	KPA	312	Retrofit Environmental, a division of The Retrofit Companies, Inc.*	514
Ansell Healthcare Products LLC	314	LAPCO Manufacturing Inc.	L705	Rogan's Work	412
AP Safety Training, Inc.*	617	Lighthouse Safety LLC	600	Safe-Fast, Inc.	318
Armor Guys	208	3M*	L704	Safety Engineered Systems	319
Atlas Technical Consultants LLC*	219	Magid	415/417	Safety Rail Company*	205
Banom	307	MarketForce Inc.	616	Sakk Safety LLC	114
Bay West LLC*	209	Martor	109	SaltCo LLC	216
Becklar Workforce Safety	618	Master Lock	402	Schwickert's Tecta America*	520
Blue Ethos Specialized Training	104	Med Compass*	400	Showa	L703
Boplan USA Inc	213	Midwest Special Instruments	403	Silva Non Skid Solutions LLC	416
Border States Electric	201	Minnesota Clean Cities Coalition	108	SKC, Inc.	621
BSA Acquisition Corp	204/206	Minnesota Department of Labor & Industry, Occupational Safety & Health Division (MNOSHA)*	419	SmartCells Anti-Fatigue Solutions	105
Bureau Veritas	612	Minnesota Department of Labor & Industry, Workplace Safety Consultation*	214	Soundtrace	L707
Chet's Shoes	605	Minnesota Network of Employers for Traffic Safety (MN NETS)*	623	Sonetics Corporation	420
Cintas Corporation*	406/408	Minnesota Occupational Health	502	Southern Minnesota Inspection*	121
Columbia Southern University	203	Minnesota Retain	320	Sundstrom Respiratory	603
Cordova Safety Products	615	Minnesota Safety Council*	623/624	SureWerx	101/103
Dalmec Manipulators	119	Moldex	321	The Teehive	221
Draeger Inc	116	MSA Safety	110	Thompson Solutions Group	308
DSC Communications	218	National Safety Education Center	409	TKDA*	303
DuPont Personal Protection	625	Non-Slip Safety, 4U LLC	302	Trav's Outfitter	309
EDC Solutions – Electronic Design Company*	418	North American Safety	112	TSI Incorporated*	619
Edge PPE	609/610	Northern Safety LLC*	118	UniFirst First Aid + Safety	115
Ejendals Inc.	106	OECS*	304	U.S. Compliance*	512
ErgoFactor, Inc.	421	One 2 One Marketing	608	Veritas Crane	107
ErgoWorks	305	Onsite Medical Service, Inc.*	508	Walman Optical Safety Eyewear*	401/500
Field Environmental Instruments, Inc.	L701	On-Site Solutions Physical Therapy	413	Wells Lamont Industrial	313
Fit For Work	300	Onyx Cool	521	Werner Co	202
Gaize, Inc.	316	OSR Physical Therapy	620	Winter Walking	L702
Garlock Safety Systems	626/627	PAM Health	207	ZOLL Medical Corporation	315
Globus Global Safety	602	Philips	215		
Hastings Air Energy Control, Inc.	506	Portwest LLC	217		
HealthPartners Occupational & Environmental Medicine	200	Precision Driving Center*	607		
Heattrak, Inc.	516/518	Productivity, Inc.*	504		
HighPoint EHS	622	ProtectEar USA, LLC	611		
Honeywell	L706	Protection and Control Solutions LLC	L700		
HyTest Safety Shoe Service	613/614				

*Minnesota Safety Council Member

EXHIBIT HALLS OPEN

Monday 8:00 AM – 3:30 PM

Tuesday 8:00 AM – 3:00 PM

EXHIBITORS BY CATEGORY

EDUCATION/TRAINING

- Access Safety Specialists
- American Society of Safety Professionals (ASSP) Northwest Chapter
- AP Safety Training, Inc.
- Bay West LLC
- Blue Ethos Specialized Training
- Cintas Corporation
- Columbia Southern University
- ErgoFactor Inc.
- ErgoWorks
- Honeywell
- IEA, Inc.
- KPA
- Magid
- Minnesota Clean Cities Coalition
- Minnesota Department of Labor and Industry, Occupational Safety and Health Division (MNOSHA)
- Minnesota Department of Labor and Industry, Workplace Safety Consultation
- Minnesota Network of Employers for Traffic Safety (MN NETS)
- Minnesota Occupational Health
- Minnesota Safety Council
- MSA Safety
- National Safety Education Center
- Northern Safety LLC
- Onsite Medical Service, Inc.
- OECS
- OSR Physical Therapy
- PAM Health
- Precision Driving Center
- R.C. Bremer Marketing Associates
- RESA Power Service
- Safety Engineered Systems
- Southern Minnesota Inspection
- Thompson Solutions Group
- UniFirst First Aid + Safety
- Veritas Crane
- Werner

ERGONOMIC SERVICES

- Active Release Techniques
- American Society of Safety Professionals (ASSP) Northwest Chapter
- Dalmech Manipulators
- ErgoFactor Inc.
- ErgoWorks
- Fit For Work
- Hastings Air Energy Control, Inc.
- Innovative Office Solutions
- IEA, Inc.
- Minnesota Clean Cities Coalition
- Minnesota Department of Labor and Industry, Workplace Safety Consultation
- Minnesota Occupational Health

- Minnesota RETAIN
- On-Site Solutions Physical Therapy
- OECS
- OSR Physical Therapy
- R.C. Bremer Marketing Associates
- SmartCells Anti-Fatigue Solutions
- SureWex
- Trav's Outfitter

FIRE PROTECTION/SECURITY

- American Society of Safety Professionals (ASSP) Northwest Chapter
- Honeywell
- MarketForce Inc
- MSA Safety
- One 2 One Marketing
- Portwest
- Schwickert's Tecta America
- TKDA
- UniFirst First Aid + Safety

HEALTH/MEDICAL SERVICES

- Active Release Techniques
- American Society of Safety Professionals (ASSP) Northwest Chapter
- Cintas Corporation
- ErgoWorks
- Fit For Work
- Gaize, Inc.
- HealthPartners Occupational & Environmental Medicine
- Keystone Treatment Center
- MED Compass
- Midwest Special Instruments
- Minnesota Occupational Health
- Minnesota RETAIN
- Onsite Medical Service, Inc.
- On-Site Solutions Physical Therapy
- OSR Physical Therapy
- PAM Health
- Portwest
- R.C. Bremer Marketing Associates
- SHOWA
- Soundtrace
- ZOLL Medical Corporation

INCENTIVES/AWARDS

- One 2 One Marketing
- SaltCo

INDUSTRIAL HYGIENE

- ALS Environmental
- American Society of Safety Professionals (ASSP) Northwest Chapter

- Atlas Technical Consultants LLC
- Bay West LLC
- Bureau Veritas
- Cintas Corporation
- Field Environmental Instruments, Inc.
- Fit For Work
- Hastings Air Energy Control, Inc.
- Honeywell
- Innovative Office Solutions
- IEA, Inc.
- ISK Industries
- Minnesota Clean Cities Coalition
- Minnesota Department of Labor and Industry, Workplace Safety Consultation
- One 2 One Marketing
- Onsite Medical Service, Inc.
- OECS
- SaltCo
- SKC, Inc
- Soundtrace
- TSI Incorporated
- U.S. Compliance

OTHER

- ActivePure Technologies
- Atlas Technical Consultants LLC
- Becklar Workforce Safety
- Blue Ethos Specialized Training
- EDC Solutions
- Field Environmental Instruments, Inc.
- Hastings Air Energy Control, Inc.
- HeatTrak LLC
- Honeywell
- Hy-Test Safety Shoe Service
- IEA, Inc.
- Keystone Treatment Center
- LAPCO Manufacturing, Inc.
- Minnesota Clean Cities Coalition
- Minnesota Department of Labor and Industry, Occupational Safety and Health Division (MNOSHA)
- Non-Slip Safety 4 U
- One 2 One Marketing
- Philips
- Productivity, Inc.
- Protection & Control Solutions
- Red Wing Shoe Company
- RefrigiWear
- Rogan's Shoes
- Sakk Safety
- Schwickert's Tecta America
- Silva Non Skid Solutions
- The Teehive
- TKDA
- Walman Optical Safety Eyewear

EXHIBITORS BY CATEGORY

SAFETY EQUIPMENT

- 3M
- Access Safety Specialists
- Airgas
- American Society of Safety Professionals (ASSP) Northwest Chapter
- Ansell Healthcare Products LLC
- Armor Guys
- Banom
- Boplan USA Inc
- Border States Electric
- BSA, Manufacturers Representative
- Chet's Shoes
- Cintas Corporation
- Cordova Safety Products
- Dalmec Manipulators
- Draeger
- DSC Communications
- DuPont Personal Protection
- EDGE PPE
- Ejendals Inc.
- Field Environmental Instruments, Inc.
- Garlock Safety Systems
- Globus Global Safety
- Hastings Air Energy Control, Inc.
- HeatTrak LLC
- Honeywell
- Hy-Test Safety Shoe Service
- Innovative Office Solutions
- ISK Industries
- Kenwood/WS Communication
- LAPCO Manufacturing, Inc.
- Lighthouse Safety
- Magid
- MarketForce Inc
- Martor
- Master Lock
- Midwest Special Instruments
- Minnesota Clean Cities Coalition
- Minnesota Department of Labor and Industry, Workplace Safety Consultation
- Moldex
- MSA Safety
- North American Safety
- One 2 One Marketing
- Onyx Cool
- Portwest
- Productivity, Inc.
- ProtectEar USA
- Protection & Control Solutions
- R.C. Bremer Marketing Associates
- RAECO Rents LLC
- Red Wing Shoe Company
- RefrigiWear
- Safe-Fast, Inc.
- Safety Engineered Systems

- Sakk Safety
- SaltCo
- Schwickert's Tecta America
- SHOWA
- Silva Non Skid Solutions
- Sonetics
- Southern Minnesota Inspection
- Sundstrom Respiratory
- SureWex
- Trav's Outfitter
- UniFirst First Aid + Safety
- Veritas Crane
- Walman Optical Safety Eyewear
- Wells Lamont Industrial
- Werner
- Winter Walking
- ZOLL Medical Corporation

SAFETY SERVICES

- Access Safety Specialists
- Airgas
- American Society of Safety Professionals (ASSP) Northwest Chapter
- Armor Guys
- Atlas Technical Consultants LLC
- Bay West LLC
- Blue Ethos Specialized Training
- Border States Electric
- BSA, Manufacturers Representative
- Cintas Corporation
- DuPont Personal Protection
- Fit For Work
- Highpoint EHS
- Honeywell
- Hy-Test Safety Shoe Service
- Innovative Office Solutions
- IEA, Inc.
- ISK Industries
- Kenwood/WS Communication
- KPA
- Lighthouse Safety
- Magid
- Master Lock
- Minnesota Clean Cities Coalition
- Minnesota Department of Labor and Industry, Occupational Safety and Health Division (MNOSHA)
- Minnesota Department of Labor and Industry, Workplace Safety Consultation
- Minnesota Occupational Health
- National Safety Education Center
- Non-Slip Safety 4 U
- North American Safety
- Onsite Medical Service, Inc.
- OECS
- On-Site Solutions Physical Therapy

- OSR Physical Therapy
- PAM Health
- Portwest
- Productivity, Inc.
- R.C. Bremer Marketing Associates
- Red Wing Shoe Company
- RESA Power Service
- Retrofit Environmental
- Safety Engineered Systems
- Safety Rail Company
- SaltCo
- Schwickert's Tecta America
- Soundtrace
- Southern Minnesota Inspection
- Thompson Solutions Group
- TKDA
- Trav's Outfitter
- U.S. Compliance
- UniFirst First Aid + Safety
- Veritas Crane
- Werner

SAFETY SIGNS

- Airgas
- American Society of Safety Professionals (ASSP) Northwest Chapter
- ISK Industries
- Minnesota Clean Cities Coalition
- Minnesota Department of Labor and Industry, Workplace Safety Consultation
- One 2 One Marketing
- Productivity, Inc.
- RESA Power Service
- Safe-Fast, Inc.
- UniFirst First Aid + Safety

SAFETY SOFTWARE

- American Society of Safety Professionals (ASSP) Northwest Chapter
- AP Safety Training, Inc.
- Becklar Workforce Safety
- DSC Communications
- Gaize, Inc.
- KPA
- MSA Safety
- OECS
- Soundtrace
- TSI Incorporated
- U.S. Compliance
- UniFirst First Aid + Safety
- ZOLL Medical Corporation

MEET OUR EXHIBITORS

Access Safety Specialists

■ BOOTH 100

1629 West Washington Street
Appleton, WI 54914
Brent Rehberg
920-750-9175
brent@access-safety-specialists.com
www.access-safety-specialists.com

Access Safety Specialists is a full-service fall protection supplier, from hazard identification to design and installation, to training and inspection, #savingyourASS

ActivePure Technologies

■ BOOTH 306

1825 North Broadway
Rochester, MN 55906
Clavonne Holter
507-254-1121
drivetohealth@gmail.com
www.drivetohealth.com

Future Proof your buildings for sustainability with IAQ & Surface Sanitation Medical Grade Pathogen Mitigation. Achieve Eco & Net-Zero Goals. Chemical Free, Filterless Space Technology neutralizes RNA and DNA viruses, MRSA, mold and bacteria. Suitable for all sizes and types of buildings and vehicles.

Active Release Techniques

■ BOOTH 113/212

9240 Explorer Drive, Suite 210
Colorado Springs, CO 80920
Todd Prather
785-250-8542
tprather@artcorpsolutions.com
www.activerelease.com

Active Release Techniques® is the leading provider of non-invasive treatment for soft-tissue and nerve issues, such as strains, sprains, and musculoskeletal disorders (MSDs). Our hands-on, movement-based approach swiftly alleviates pain and restores function, ensuring fuller, faster recovery compared to traditional therapy methods. ART is the only soft tissue treatment called out specifically by OSHA as first aid.

Airgas

■ BOOTH 405/407

21229 Hamburg Avenue
Lakeville, MN 55044
Bruce Matzdorff
651-279-3222
bruce.matzdorff@airgas.com
www.airgas.com

Airgas is a leading supplier of safety products in the U.S. To keep your employees and facilities running safely, Airgas offers people and facilities safety, welding supplies and vendor managed inventory solutions. Airgas is also a global supplier of industrial, medical and specialty gases such as calibration and EPA Protocol gas.

ALS Environmental

■ BOOTH 220

960 West LeVoy Drive, Suite 115
Salt Lake City, UT 84123
Jessica Cofrancesco
801-842-6182
jessica.cofrancesco@alsglobal.com
www.alsglobal.com

We are a full-service Industrial Hygiene laboratory. We have 50 years of continuous AIHA accreditation.

American Society of Safety Professionals (ASSP) Northwest Chapter

■ BOOTH 404

474 Concordia Avenue
Saint Paul, MN 55103
Chris Flegel
612-282-0820
chrisf30@gmail.com
www.northwest.assp.org

ASSP NW Chapter is a local chapter of the American Society of Safety Professionals. ASSP provides resources, networking and assists with standard development with OSHA. Monthly events are held locally, and a virtual option is available to members and non-members.

Ansell Healthcare Products LLC

■ BOOTH 314

111 Wood Avenue South
Iselin, NJ 08830
Drew Crockett
651-894-2845
drew.crockett@ansell.com
www.ansell.com

Ansell offers best-in-class cut-resistant hand and forearm protection; chemical-resistant PPE solutions with verifiable data to ensure worker safety.

AP Safety Training, Inc.

■ BOOTH 617

P.O. Box 1257
Lexington, SC 29071
Palani Pozzani
612-843-2214/800-311-1143x1214
palani@apsafetytraining.com
www.apsafetytraining.com

AP Safety Training provides employee training for safety and HR topics in multiple formats, including video streaming, LMS with testing and tracking features, SCORM course shares, MP4s, and DVDs. Use our existing library of thousands of programs or let us create custom content for you!

Armor Guys

■ BOOTH 208

10990 Wilshire Boulevard, Suite 1410
Los Angeles, CA 90024
Chris Chamberland
612-418-4901
cchamberland@armorguys.com
www.armorguys.com

Manufacturer of quality hand and arm protection sold through authorized distribution partners.

Atlas Technical Consultants LLC

■ BOOTH 219

5301 East River Road, Suite 101
Fridley, MN 55421
Kevin Cairns
763-347-7193
kevin.cairns@oneatlas.com
www.oneatlas.com

Atlas Technical Consultants LLC is a national network of professionals delivering comprehensive environmental and engineering services across a wide range of industries. As trusted advisors to our clients, we provide everything from analytical services to consulting to litigation support. Our industry hygiene/safety services include indoor air quality assessments, microbial surveys, radon testing, water intrusion investigations, asbestos and hazardous materials assessments, OSHA compliance, and disaster response.

MEET OUR EXHIBITORS

Banom

■ BOOTH 307

PO Box 687
Wayne, PA 19087
Lisa Hughes
262-294-8908
lisa@banom.com
banom.com

Banom® was founded as a family-owned business in 1987. We provide cut-resistant gloves and sleeves to the sheet metal, glass, paper, and food processing industries. We are a manufacturer. We have our own production and are vertically integrated. We believe that tensile strength is an integral component of cut-resistance. It is needed to stop the force of a cutting edge. Banom® is committed to safety and sustainability. Our products and raw materials are independently certified by the Hohenstein Institute for having no harmful substances. We are bio-fueled with zero emissions. Our Bantex® reconditioning process is a Clean Green® cleaning method that maintains product safety and integrity. This results in a reduction in cost and eliminates waste sent to the landfill.

Bay West LLC

■ BOOTH 209

5 Empire Drive
Saint Paul, MN 55103
Tony Meyer
651-291-3404
tmeyer@baywest.com
www.baywest.com

Bay West, the Upper Midwest's premium environmental consulting, industrial services, and emergency response provider, has been the industry leader in safety thanks to our team of in-house safety trainers. Our corporate training staff now brings that expertise to our clients, by offering the same 8-hour HAZWOPER refresher trainings to you. Customer-focused services and solutions. That's the Bay West advantage.

Becklar Workforce Safety

■ BOOTH 618

1069 South Stewart Drive, Suite #3
Ogden, UT 84404
Simon Crapo
801-870-9316
scrapo@becklar.com
www.becklar.com

Innovative Workforce Safety Solutions. Digital PPE providing connected safety solutions to protect employees everywhere. Our workplace safety solutions are created to protect people who work alone, at height, or in other hazardous environments.

Blue Ethos Specialized Training

■ BOOTH 104

10085 179th Lane Northwest
Elk River, MN 55303
Drew Moldenhauer
763-486-0441
drew@blue-ethos.com
www.blue-ethos.com

We offer Active Threat Preparedness Training to public and private entities, we also offer De-Escalation, CPR/First Aid, Threat Assessments, and Security Consulting

Boplan USA Inc

■ BOOTH 213

4350 West White Road, Suite 300
Flowery Branch, GA 30542
Kevin Shen
678-890-5906
kevin.shen@boplan.com
www.boplan.com

Boplan is the original manufacturer of flexible safety barriers, guardrails, handrails and other polymer safety products, focused on offering optimal protection for people, buildings and infrastructure.

Border States Electric

■ BOOTH 201

2400 38th Street South
Fargo, ND 58104
Ryan Holte
612-757-9803
rholte@borderstates.com
www.borderstates.com

Border States is a 100% employee-owned electrical wholesale distributor. From our Branch Support Center (corporate office) in Fargo, North Dakota, and our 124 branch locations in 29 states, we provide products and services to the construction, industrial and utility markets. As employee-owners, we work hard to solve problems and take care of customers because we have stake in the game. We value the well-being of our neighbors and share our resources

to enhance the quality of life in the communities where we live. Because your safety matters, we offer a safety catalog — check it out at borderstates.com.

BSA Acquisition Corp

■ BOOTH 204/206

897 South Front Street
Columbus, OH 43206
Tony Frederick
612-532-3452
tonyf@bsarep.com
www.bsarep.com

BSA Manufacturing rep group partnering with Tingley (protective footwear & rainwear), Ultratech (spill containment and storm water management), Draeger (air purifying respiratory protection), First Aid Only (first aid & emergency care), and Allsport (premium hydration drinks).

Bureau Veritas

■ BOOTH 612

22345 Roethel Drive
Novi, MI 48375
Michael Dew
224-475-6556
Michael.dew@bureauveritas.com
www.bvna.com/industrial-hygiene.com

Bureau Veritas has been a leading provider of Industrial Hygiene analytical services in North America for more than 60 years. Our laboratories have been accredited by the American Industrial Hygiene Association Laboratory Accreditation Program (AIHA-LAP, LLC) since 1974.

Chet's Shoes

■ BOOTH 605

8870 Rendova Street Northeast
Circle Pines, MN 55014
Tony Vescio
763-253-1062
tony@chetsshoes.com
www.chetsshoes.com

Chet's Shoes is a family owned, safety footwear company that has served its customers since 1947. We have stores in Spring Lake Park and Circle Pines. We also have mobile shoe trucks, an online store and we offer mail order programs. We specialize in providing our customers with a traditional shoe store experience, quality footwear and excellent customer service.

MEET OUR EXHIBITORS

Cintas Corporation

■ BOOTH 406/408

11500 95th Avenue North
Maple Grove, MN 55369
Brad Beyer
651-334-8436
beyerb2@cintas.com
www.cintas.com

We provide services from FR clothing, first aid products, and AED's to training, personal protective equipment, floor mats and much more!

Columbia Southern University

■ BOOTH 203

21982 University Lane
Orange Beach, AL 36561
Becky Ardrey
251-455-9359
becky.ardrey@columbiasouthern.edu
www.columbiasouthern.edu

Since 1993, Columbia Southern University has been an innovator in online education, CSU was established in 1993 to provide an alternative to the traditional university experience for busy, working adults. CSU offers online associate, bachelor's, master's and doctoral degrees such as occupational safety and health, business administration, and more. CSU's and master's degree programs in occupational safety and health are recognized by the Board of Certified Safety Professionals as Graduate Safety Practitioner® Qualified Academic Programs. Visit ColumbiaSouthern.edu or call 251-923-4055 to learn more.

Cordova Safety Products

■ BOOTH 615

4025 Viscount Avenue
Memphis, TN 38118
Robert Maners
901-378-1745
bmaners@cordovaisc.com
www.cordovasafety.com
Full Line PPE Provider

Dalmec Manipulators

■ BOOTH 119

469 Fox Court
Bloomingdale, IL 60108
Al Izzo
630-307-8426
aizzo@dalmecusa.com
www.dalmec.com

Material handling of any products through pneumatics, rolls, shafts, boxes, bags, steel sheets/panels, castings, wire spools, etc. Safe and weightless with infinite precision.

Draeger Inc

■ BOOTH 116

7256 South Sam Houston Parkway
Houston, TX 77085
Andy Scanlan
636-221-8243
andrew.scanlan@draeger.com
www.draeger.com

Manufacturer of Gas Detection and Respiratory Protection Products.

DSC Communications

■ BOOTH 218

711 Hammond Avenue
Superior, WI 54880
Dsccommunications.com

Motorola solutions channel partner. Offering communication and video solutions for a safer and more efficient environment. Two-way radios, video security, access control, safety solutions.

DuPont Personal Protection

■ BOOTH 625

5401 Jefferson Davis Hwy
Richmond, VA 23234
Jake Kubiawicz
612-202-4491
jake.kubiawicz@dupont.com
www.dupont.com

Discover the superior protection of DuPont Tyvek® and Tychem® garments at the Minnesota Health and Safety Conference! Engineered for durability, comfort, and safety, these industry-leading protective solutions shield against hazardous particles, liquids, and chemicals, ensuring workers stay safe in the toughest environments. Visit our booth to explore our latest innovations and find the perfect protective gear for your needs.

Edge PPE

■ BOOTH 609/610

800 East North Street, Suite A
Elburn, IL 60119
Jeff Smith
513-426-2202
jeff@edgeppe.com
www.edgeppe.com

Manufacturer's representative agency representing safety and industrial products throughout the Midwest.

Ejendals Inc.

■ BOOTH 106

2745 Whitehall Park Drive, Suite 300
Charlotte, NC 28273
Bryan West
262-398-1900
bryan.west@ejendals.com
www.ejendals.com

With over 75 years' experience, Ejendals is excited to introduce our Jalas and Tegera brands. We specialize in some of the most ergonomic, comfortable, and dexterous hand and foot protection products in the market.

EDC Solutions – Electronic Design Company

■ BOOTH 418

3225 East Hennepin Avenue
Minneapolis, MN 55113
Seth Baker
612-355-2305
sbaker@edcsolutions.com
www.edcsolutions.com

EDC Solutions specializes in Critical Audio & Video Communications: Paging/Voice Alarm/Mass Notification. Analyze. Design. Integrate. Maintain. We can engage with your organization at any stage.

ErgoFactor, Inc.

■ BOOTH 421

P.O. Box 7290
Appleton, WI 54912
Melissa Samuels
920-858-6652
msamuels@ergofactor.com
www.ergofactor.com

ErgoFactor provides ergonomic consulting and software services across the globe to reduce ergonomic risk in the workplace. Our goal is to help our partners identify and mitigate risk by providing solutions that make sense and can be applied. Our product assists with leave management, return to work, ADA restriction management, and much more.

MEET OUR EXHIBITORS

ErgoWorks

■ BOOTH 305

P.O. 240963
Apple Valley, MN 55124
Beth Mayotte
952-210-6431
bethm@ergoworksmn.com
www.ergoworksmn.com

ErgoWorks is a Minnesota company dedicated to the health and safety of employees. With a suite of services to prevent injuries, our onsite therapists are certified in ergonomics and customize to your company's needs. OSHA First Aid guidelines paired with ergonomic assessment and solutions make ErgoWorks your expert partner in injury prevention.

Field Environmental Instruments, Inc.

■ BOOTH L701

7600 West 27th Street, Suite A-7
St. Louis Park, MN 55426
Ashrene Mohammed
866-580-5512
Amohammed.mn@fielddenvironmental.com
www.fielddenvironmental.com

Field Environmental Instruments offers an extensive inventory of environmental instrumentation and monitoring equipment, supplies and unmatched service. With 14 full-service locations strategically located throughout the United States, FEI is able to rapidly respond to customers' equipment and instrumentation needs.

Fit For Work

■ BOOTH 300

4040 Broadway Street, Suite 220
San Antonio, TX 78209
Lauren Noens
978-870-8305
lnoens@wellworkforce.com
www.wellworkforce.com

Founded in 1998, Fit For Work is a nationwide leader in injury prevention and workplace safety. Together with WorkSTEPS, and our combined network of safety and testing experts, we bring evolving, innovative solutions to businesses across all industries. Fit For Work provides significant reduction in both injuries and their associated costs by focusing on three leading indicators to injury: early soreness, ergonomics

and behaviors. We deliver proven results that keep employees, and businesses, safe and productive — on the floor, in the field and everywhere else. Currently onsite at over 850 locations across the United States, we are expanding rapidly. Learn more at www.wellworkforce.com and www.worksteps.com

Gaize, Inc.

■ BOOTH 316

3504 South 3rd Street
Missoula, MT 59804
Dan Zell
612-279-0450
dan.zell@gaize.ai
www.gaize.ai

Gaize makes workplaces safer by detecting active drug impairment while respecting workers' rights.

Garlock Safety Systems

■ BOOTH 626/627

2601 Niagara Lane North
Plymouth, MN 55447
Katie Johnson
612-213-9844
kjohnson@garlocksafety.com
www.garlocksafety.com

For over 35 years Garlock™ Safety Systems has been arming worksites with best-in-class fall prevention solutions. Our outdoor and indoor product lines are engineered by our safety experts and rigorously tested to exceed government regulations so you can be certain you get the right solution to protect the men and women who depend on it. Delivered with customer service you can count on, we leave nothing to chance. Because when it comes to worker safety, we "Leave No Doubt."

Globus Global Safety

■ BOOTH 602

13915 Radium Street Northwest
Ramsey, MN 55303
Curt Selinsky
763-489-8694
Curt.selinsky@globalglove.com
www.globalglove.com

We are a personal protection equipment manufacturer based in Ramsey, Minnesota. Globus Global Safety sells to exclusive distribution partners. Hand Protection, Protective Clothing, Head

Protection, Knee Protection, Cooling, Hearing Protection. Coming Soon – Respiratory Protection.

Hastings Air Energy Control, Inc.

■ BOOTH 506

5555 South Westridge Drive
New Berlin, WI 53151
800-236-8450
info@hastingsair.com
www.hastingsair.com

Hastings Air Energy Control, Inc. provides highly efficient ventilation systems (wet or dry dust collectors and downdraft tables, air cleaners, environmental booths, vacuums, weld gun source capture systems) that enable users to comply with air quality codes and regulations.

HealthPartners Occupational & Environmental Medicine

■ BOOTH 200

1665 Utica Avenue S, Suite 100
Saint Louis Park, MN 55416
John Eibs & Cynthia Henderson
844-562-3627/844-JOB-DOCS
occmaccountmanagers@healthpartners.com
www.healthpartners.com/occm

Your specialized occupational medicine partner with five convenient locations in St. Louis Park, Minneapolis, St. Paul, Stillwater, and Hudson. We are pleased to provide comprehensive occupational medicine services in injury care, fitness for duty/return to work, pre-placement, DOT, FAA, HAZ-MAT, POETs (Post-Offer Employment Testing) Respirator Clearance Program: On-Line Respirator Medical Evaluation, Fit Testing, audiogram/hearing conservation programs, medical monitoring & surveillance programs, vaccinations, titers, environmental medicine, MD directorships/consulting, and a dedicated onsite team offering a full scope of services. With over 40 years of experience in providing occupational medicine services, how can we help you?

MEET OUR EXHIBITORS

Heattrak, Inc.

■ BOOTH 516/518

3645 Clearview Parkway
Doraville, GA 30340
Jeff Frances
678-540-4338
jeff@heattrak.com
www.heattrak.com

The industry leader in heated snow/ice melting safety mats. HeatTrak PRO mats will revolutionize how facilities prevent slip and fall injuries due to snow/ice. No salt, no shoveling and no slipping. HeatTrak PRO is the highly durable, seasonal solution that will change the way companies and institutions keep people safe all winter.

HighPoint EHS

■ BOOTH 622

1316 81st Avenue NE
Spring Lake Park, MN 55432
Kirk Cristilly
763-221-1765
kirk@highpointehs.com
www.highpointehs.com

HighPoint Services are OSHA Compliance Safety Services; Written Safety Programs and Site Specific Procedures; Employee Safety Training and Safety Committees; Facility Compliance and Inspections; and Certified AED, CPR and First Aid Training.

Honeywell

■ BOOTH L706

9680 Old Bales Road
Fort Mill, SC 29707
Shari Kowalke
612-523-9493
Shari.kowalke@honeywell.com
www.honeywell.com

At Honeywell PPE our head-to-toe safety portfolio has been providing workers with comprehensive safety solutions, some for over 100 years. Today our safety solutions helps secure the 500 million workers by adjusting to a variety of needs and applications. Our dependable PPE helps enhance productivity and performance without getting in the way. Most importantly, our PPE helps keep workers safer until the end of their shift.

HyTest Safety Shoe Service

■ BOOTH 613/614

225 East Roselawn Avenue, Suite 1
Maplewood, MN 55117
Pete Pittelkow
414-559-5820
pete@htsafetyshoes.com
www.htsafetyshoes.com

Leading distributor of occupational footwear with over 50 brand names; shoe mobile, retail, web and mail order.

IEA, Inc.

■ BOOTH 414

9201 West Broadway, Suite 600
Brooklyn Park, MN 55445
Amy Satterfield
763-315-7900
amy.satterfield@ieasafety.com
www.ieasafety.com

IEA, Inc. offers comprehensive consulting services in environmental health and safety, including OSHA compliance, indoor air quality, training, asbestos and lead management, industrial hygiene and facility management.

Innovative Office Solutions

■ BOOTH 604

151 Cliff Road East
Burnsville, MN 55337
Ryan Burgwald
612-859-2500
rburgwald@innovativeos.com
www.innovativeos.com

Innovative pairs the perfect blend of products with exceptional service to build lasting partnerships that enhance workplaces, wherever work happens. Services include: MRO, industrial and safety products, janitorial and sanitation supplies, and equipment and services, furniture and design, technology. Managed Print Solutions, Branded Solutions and Office Essentials.

ISK Industries

■ BOOTH 601

99 Boulder Drive
Lake in the Hills, IL 60156
Paula Booker
612-559-6396
pbooker@isk-industries.com
www.isk-industries.com

ISK Industries is a manufacturer's representative firm committed to

providing the best solutions to the industrial workspace. We represent a limited portfolio of safety and industrial products that allow us to build relationships with distribution and end user partners to provide the best solution to their needs.

Kenwood/WS Communications

■ BOOTH 301

400 North Bluff Road
Collinsville, IL 62234
Jason Murphy
618-344-1800
jmurphy@wscommunications.com
www.wscommunications.com

WS Communications is a full-service provider of Kenwood Protalk two-way radios and accessories. We also carry a full line of wireless niche items that promote safety and security for facilities of all sizes.

Keystone Treatment Center

■ BOOTH 606

3800 South Kiwanis Avenue
Sioux Falls, SD 57105
Greg Munce
Greg.Munce@keystonetreatment.com
www.keystonetreatment.com

Since 1973, Keystone Treatment Center has provided transformative care rooted in spiritual and cultural values. Our comprehensive services assist those who are living with substance use disorders, gambling addiction, and co-occurring concerns. Our full continuum of care includes: Detoxification, Inpatient Treatment and Intensive Outpatient Services.

KPA

■ BOOTH 312

11080 Circle Point Road, Suite 200
Westminster, CO 80020
Jonica Patton
503-963-4216
jpatten@kpa.io
www.kpa.io

An Environmental Health and Safety software platform tailored to the needs of your business. All-in-One system designed to engage your employees, instill a culture of safety, and enable regulatory compliance.

MEET OUR EXHIBITORS

LAPCO Manufacturing Inc.

■ BOOTH L705

98 Glenwood Street
Morgan City, LA 70380
Tiffany Giroir
985-385-5380
marketing@lapco.com
www.lapco.com

LAPCO Manufacturing Inc. (LAPCO FR) is a trusted leader in the flame-resistant (FR) workwear and industrial apparel, serving energy, utilities, and industrial sectors. From FR jeans and shirts to outerwear and coveralls, LAPCO FR products are built for tough environments. With a dedication to craftsmanship and customer satisfaction, we continue to set the standard of safety, reliability, and comfort in the workwear industry.

Lighthouse Safety LLC

■ BOOTH 600

3620 North 126th Street
Brookfield, WI 53005
Steve Mais
262-788-3463
steve@lighthousesafety.com
www.lighthousesafety.com

Lighthouse Safety helps create and maintain safe work environments for its clients by providing informed access to the most current products and training in fall protection, rescue and confined space entry.

3M

■ BOOTH L704

3M Center Building 223
Saint Paul, MN 55144
Sarah Johnson
sjohnson5@mmm.com
www.3m.com/3M/en_US/worker-health-safety-us/

From the most basic to the most specialized needs, 3M offers the health and safety protection you and your workers need most, so everyone can perform at their best.

Magid

■ BOOTH 415/417

1300 Naperville Drive
Romeoville, IL 60446
www.magidglove.com

We're Safety Experts with Innovative Solutions! Our expertise, innovative PPE, and full-service approach to safety set Magid apart. For more information, visit www.magidglove.com

MarketForce Inc.

■ BOOTH 616

50164 Pontiac Trail, Unit 9
Wixom, MI 48393
Joe Clark
612-413-0202
jclark@marketforceinc.net
www.marketforceinc.net

Market Force is a Midwest-based manufacturer's representative agency representing the safety, industrial, construction, and public safety markets. Since 2001, we have built a first class team of sales professionals and an inside support team.

Martor

■ BOOTH 109

580 Centerline Drive
Hobart, WI 54155
Paul DeTennis
920-662-9646
paul.detennis@martorusa.com
www.martorusa.com

With MARTOR, it is our mission to provide safer-cutting solutions in the workplace. Our safety knives exceed the highest standards for quality, efficiency, and sustainability. MARTOR's five-level safety classifications redefine and set the standards for the safety knife industry. Training and education are high priorities, customer safety is our focus, and we pride ourselves on finding the best solutions for you.

Master Lock

■ BOOTH 402

6744 South Howell Avenue
Oak Creek, WI 53154
Steve Mrazek
414-333-5654
smrazek@mlock.com
www.masterlock.com

Master Lock is recognized around the world as the authentic, enduring name in padlocks, security and safety lockout products and services.

Med Compass

■ BOOTH 400

7841 Wayzata Boulevard, Suite 214
Minneapolis, MN 55426
Bobby Lahr
952-542-9333
bobby@medcompass.net
www.medcompass.net

Since 1985, Med Compass has been offering OSHA compliance for occupational hearing tests, medical respiratory clearance, respirator fit tests, vision testing, plus SCBA/HAZMAT physicals — all at your doorstep! Med Compass has the most experienced personnel to analyze documentation. Along with our field technicians we bring the total package, collecting and analyzing information to insure you stay in compliance with OSHA. Wellness programs and sound surveys round out our services. Experience stress-free and timely testing at a time convenient for you.

Midwest Special Instruments

■ BOOTH 403

12302 Princeton Avenue
Savage, MN 55378
Jason McKenna
952-230-6365
jason@midwestsi.com
www.midwestsi.com

Sales and service of audiometers, spirometers, vision screeners, breath alcohol testers and respirator fit testers.

Minnesota Clean Cities Coalition

■ BOOTH 108

PO Box 4037
Saint Paul, MN 55104
Lisa Thurstin
651-223-9568
lisa.thurstin@lung.org
www.cleanairchoice.org

Minnesota Clean Cities Coalition is a technical resource for vehicle fleets and businesses interested in reducing their fuel costs, improving fleet efficiency, or exploring cleaner fuel choices and new technologies. As part of the US Department of Energy's Clean Cities & Communities program, we have several no-cost tools and resources to help determine the most appropriate solutions for your vehicles. For more than 20 years, we have been working with stakeholders to educate drivers, deploy clean vehicles,

MEET OUR EXHIBITORS

and grow refueling and recharging infrastructure statewide. Join us for a fleet EV ride and drive on Tuesday from 10 – 1 pm or visit CleanAirChoice.org

Minnesota Department of Labor & Industry, Occupational Safety & Health Division (MNOSHA)

■ BOOTH 419

443 Lafayette Road North
Saint Paul, MN 55155
Lorinda Floding
651-284-5375
Lorinda.floding@state.mn.us
www.dli.mn.gov

Minnesota Department of Labor & Industry, Occupational Safety & Health (MNOSHA) is a federally approved state plan program, providing enforcement, consultation and outreach services to employers and employees throughout Minnesota.

Minnesota Department of Labor & Industry, Workplace Safety Consultation

■ BOOTH 214

443 Lafayette Road North
Saint Paul, MN 55155
651-284-5060
osha.consultation@state.mn.us
www.dli.mn.gov

Upon request, employers can use this free consultation service to find out about potential safety and health hazards at their worksites, improve their safety management systems and even apply for a safety grant of up to \$10,000 to abate safety hazards.

Minnesota Network of Employers for Traffic Safety (MN NETS)

■ BOOTH 623

474 Concordia Avenue
Saint Paul, MN 55103
Lisa Kons
651-228-7330
lisa.kons@mnsnc.org
www.drivesafemn.org

The Minnesota Network of Employers for Traffic Safety (NETS) is an organization dedicated exclusively to traffic safety in the workplace. Our mission is to reduce traffic-related deaths and injuries within

the workforce by developing safety policies, educational resources, training courses, and corporate community safety activities. Our programs, resources, and services are designed to reach all employees and their families.

Minnesota Occupational Health

■ BOOTH 502

1661 St. Anthony Avenue
Saint Paul, MN 55104
Kim Johnson
651-968-5510
kajohnson@mohonline.com
www.mohonline.com

For over 25 years, Minnesota Occupational Health (MOH) has grown to five full-service occupational medicine clinics: Blaine/Coon Rapids, Eagan, Shakopee, St Paul & Woodbury. Locally owned and accountable to employers like you, MOH delivers full-service work-injury care, pre-placement, work simulation, DOT, HAZMAT, Respirator and FAA exams among others. Audiograms, fit-testing, silica, chemical and heavy metal medical surveillance, vaccinations and titers are always available. In-clinic and 24/7 on-site drug testing is also offered.

Minnesota Retain

■ BOOTH 320

180 East 5th Street, Suite 1200
Saint Paul, MN 55101
Meg Odanga
651-259-7143
Margaret.odanga@state.mn.us
www.mnretain.com

The Retaining Employment and Talent after Injury/Illness Network (RETAIN) helps workers stay at or return to work when an injury or illness impacts employment.

Minnesota Safety Council

■ BOOTH 623/624

474 Concordia Avenue
Saint Paul, MN 55103
Renee Molstad
651-228-7312
renee.molstad@mnsnc.org
www.minnesotasafetycouncil.org

The Minnesota Safety Council — a chapter of the National Safety Council — is a member-based, private, not-for-profit organization dedicated to preventing

unintentional injuries — a leading cause of death, disability and economic loss. Since 1928, our sole focus has been to make Minnesota a safer and healthier place to live. Our classes, seminars and consultation help employers develop safety programs, comply with regulations and keep their workers safe. We offer traffic programs for the workplace and the larger community, including defensive driving classes for mature drivers and interactive online programs for teens. We also provide numerous resources and programs to support safety at home and in the community.

Moldex

■ BOOTH 321

10111 Jefferson Boulevard
Culver City, CA 90232
Russell Fuerst
310-837-6500
russellf@moldex.com
www.moldex.com

With over 70 patents, our innovative respiratory and hearing solutions are designed to increase compliance by maximizing worker comfort and convenience, while at the same time reducing overall costs through greater durability and extended product life spans.

MSA Safety

■ BOOTH 110

1000 Cranberry Woods Drive
Cranberry Township, PA 16066
Tyler Nieuwsma
218-793-9774
tyler.nieuwsma@msasafety.com
www.msasafety.com

MSA was founded in 1914 by two mining engineers who designed safety, rescue, and protective gear. MSA has continued to help protect people from hazards great and small. MSA makes and markets respiratory protection, gas detection, head, eye, face, and hearing protection and fall protection. MSA also offers certified fall protection and confined space training. What have we done for you lately?

MEET OUR EXHIBITORS

National Safety Education Center

■ BOOTH 409

148 North Third Street
DeKalb, IL 60115

Pettee Borissova
815-753-6903
nsec@niu.edu

www.nsec.niu.edu/nsec/

The National Safety Education Center provides the best hands-on training for all safety professionals, including human resource managers who oversee safety requirements, risk management specialists, and all workers needing to stay OSHA compliant.

Non-Slip Safety, 4U LLC

■ BOOTH 302

980 105th Avenue
Hadley, MN 56151

Brad Brands
701-741-4958

nonslipsafety4u@gmail.com
www.nonslipsafety4u.com

Non-Slip Safety 4U, LLC provides a service to aid in the prevention of slips and falls on floors/bathtubs & showers. Increased DCOF on surfaces then become much safer wet than when dry.

North American Safety

■ BOOTH 112

326 South Ash Street
Belle Plain, MN 56011

Mike Hemming
800-556-6581

mhemming@ordersafety.com
www.ordersafety.com

North American Safety is a Minnesota company founded in 2013. We are located in Belle Plaine. We specialize in head-to-toe Industrial Safety, Hi Vizability, and Corporate Apparel. We do all embroidery and screen printing in house and have fantastic quality and turn around time.

Northern Safety LLC

■ BOOTH 118

12818 241st Avenue
Staples, MN 56479

Jay Tyrrell
218-296-1731

jay.nsmn@gmail.com

Aerial Lifts (MEWP). Telehandler/ Forklift. Equipment Operator Training and Certifications. Includes service and maintenance.

OECS

■ BOOTH 304

1000 Shelard Parkway, Suite 140
Saint Louis Park, MN 55426

Chad Preese
612-481-5380

chad@oecscomply.com
www.oecscomply.com

With the OECS Total Safety Solution, we'll help you develop a workplace safety program to meet and exceed OSHA's requirements. It doesn't matter what stage you're in — hitting the reset button or looking to go to the next level we can customize a total solution for you for one affordable monthly payment. Our team of safety experts are available whenever you need them, 24/7/365. Our #1 goal is to help employees return home safely each day.

One 2 One Marketing

■ BOOTH 608

2420 East 117th Street, Suite 200
Burnsville, MN 55337

Wayne Ebert
952-567-2730

wayne.e@one2onemktg.com
www.one2onemktg.com

Branded merchandise, uniforms and apparel, recognition programs. We offer programs and services designed to enhance brand awareness, engage and motivate employees and recognize individual and organizational achievement.

Onsite Medical Service, Inc.

■ BOOTH 508

7990 – 69th Avenue
Rockford, MN 55373

Bob Ewing
612-791-2281

bob@4hearingtest.com
www.4hearingtest.com

We bring all the services of a professional clinic to your curbside in one of eight state-of-the-art mobile medical vans. We provide occupational hearing and respirator clearance examinations. Quantitative and qualitative fit testing.

Complete HAZMAT/SCBA physicals, vision screening, silica medical surveillance, hearing protection fitting and noise dosimeter testing. Currently assisting over 1,000 companies in 20 states, established 2001 A+ BBB rating. All results reviewed by a board-certified occupational health physician or doctor of audiology.

On-Site Solutions Physical Therapy

■ BOOTH 413

11320 86th Avenue North
Maple Grove, MN 55369

Melissa Gill
612-501-4753

mgill@onsitesolutionspt.com
www.onsitesolutionspt.com

On-Site Solutions Physical Therapy offers comprehensive, on-site physical therapy services tailored to your team's needs. Our PTs provide injury prevention, ergonomic assessments, body mechanics training, and hands-on treatment for aches, pains, and strains — all at your location. We equip employees with practical tools and techniques to stay healthy, reduce downtime, and enhance productivity. Elevate workplace wellness with OSSPT's targeted on-site solutions!

Onyx Cool

■ BOOTH 521

957 Tile Court

Red Wing, MN 55066

Katie Price
651-734-8587

katie@xenatherapies.com
www.xenatherapies.com

ONYX COOL wearable therapies are made with a plant-based cooling technology that is safer than ice and designed for active recovery. Our safety line is designed to help guard against heat stress and includes cooling vests and caps in two temperatures: 58 degrees for rapid cooling and 80 degrees for cool comfort and relief. ONYX COOL also makes wearable therapies for injury repair and active recovery from workplace injuries.

MEET OUR EXHIBITORS

OSR Physical Therapy

■ BOOTH 620

16550 W 78th Street, Suite B
Eden Prairie, MN 55346
Meaghan Cox/Jason Kopp
952-873-7400
meaghan.cox@osrpt.com
www.osrpt.com

Physical Therapy provider for work related injuries. Providing in clinic PT, work conditioning programs and on-site services for employer.

PAM Health

■ BOOTH 207

4671 38th Street South
Fargo, ND 58104
Mandie Kallhoff
701-404-5104
mkallhoff@pamrehab.com
www.pamhealth.com

As part of the PAM Health network, PAM Health Rehabilitation Hospital of Fargo we provide comprehensive inpatient and outpatient rehab services for individuals who have experienced acute illnesses or injuries. Our team includes physicians who specialize in treating specific diseases, which allows us to provide the best possible care for every individual.

Philips

■ BOOTH 215

22100 Bothell Everett Highway
Bothell, WA 98021
Mike Parsons
888-744-5477
www.usa.philips.com

AEDs for home, business and professional medical responders.

Portwest LLC

■ BOOTH 217

1272 Omega Parkway
Shepherdsville KY 40165
Grant Jordahl
715-864-7189
grant@portwest.us
www.portwest.us

Portwest is a leader in the design and manufacture of high quality Workwear, Footwear, Fire Resistant workwear, hi-vis apparels and PPE. Excellent quality, very competitive pricing and large stock holding ensures we offer a market leading service to all our customers.

Precision Driving Center

■ BOOTH 607

720 4th Avenue South
Saint Cloud, MN 56301
Amanda Dockendorf
320-308-1400
precisiondrivingcenter@stcloudstate.edu
www.stcloudstate.edu/
precisiondrivingcenter

Precision Driving Center is a part of Professional and Continuing Education through Saint Cloud State University. We offer hands-on vehicle training, operation, first-responder vehicle operation training, safety and other private courses for organizations. Along with our state-wide driver discount programs for those age 55 and older. We work hard with numerous partnerships and other agencies to make Minnesota roadways safer for travel.

Productivity, Inc.

■ BOOTH 504

15150 25th Avenue North
Plymouth, MN 55447
Jordan Brinkman
612-267-7927
jbrinkman@productivity.com
www.productivity.com

Full Industrial Supply distributor specializing in all PPE and inventory management to keep our customers stocked.

ProtectEar USA, LLC

■ BOOTH 611

2260 Executive Circle
Colorado Springs, CO 80906
Sharmila
800-520-0220
marketing@protectear.com
www.protectear.com

The Smartest Hearing Protection in the World. ProtectEar manufactures hearing protection you can hear through, with compatibility for all radio connections.

Protection and Control Solutions LLC

■ BOOTH L700

6133 Blue Circle Drive, Suite 100
Minnetonka, MN 55343
Greg Hess
651-900-2493
Greg.hess@electricpcs.com
www.electricpcs.com

Grace Technologies and Meltric presented by PCS, representing innovations for increasing control and powersystem reliability.

RAECO Rents LLC

■ BOOTH 317

4340 Grove Avenue
Gurnee, IL 60031
866-736-8347
rents@raecorents.com
www.raecorents.com

RAECO Rents is a nationwide rental service (US and Canada) for portable environmental testing, industrial health and safety test and measurement instruments.

R.C. Bremer Marketing Associates

■ BOOTH 515/517

6127 Green Bay Road, Suite 150
Kenosha, WI 53142
Kim Falk
763-213-4146
kfalk@rcbremer.com
www.rcbremer.com

Manufacturers rep firm specializing in fire and industrial safety products.

Red Wing Shoe Company

■ BOOTH 505/507

314 Main Street
Red Wing, MN 55066
David Hall
651-385-6567
David.Hull@redwingshoes.com
www.redwingshoes.com

Red Wing brands of America — "Professional application safety footwear and work boots."

RefrigiWear

■ BOOTH 117

54 Breakstone Drive
Dhaloenga, GA 30533
470-755-8800
lstaedelmeier@refrigiwear.com
www.refrigiwear.com

RefrigiWear offers the world's largest selection of premium insulated PPE and HiVis gear for cold and harsh working conditions.

MEET OUR EXHIBITORS

RESA Power Service

■ BOOTH 501

3890 Pleasant Ridge Drive, Suite 170
Blaine, MN 55449

Joe Schommer
612-991-7555
joe.schommer@resapower.com
www.resapower.com

Arc flash compliance and training, 70E risk assessment, electrical preventive maintenance and testing, electrical engineering and electrical safety audits.

Retrofit Environmental, a division of The Retrofit Companies, Inc.

■ BOOTH 514

2960 Yorkton Blvd
Little Canada, MN 55117
Adam Lundahl/Michelle Gwin
651-766-7422
alundahl@retrofitcompanies.com /
mgwin@retrofitcompanies.com
www.retrofitcompanies.com

Retrofit Environmental handles your regulated waste, with nationwide services including hazardous materials, chemicals, tank cleanouts, electronics, batteries and more. Reliable Service. Disposal made easy.

Rogan's Work

■ BOOTH 412

1750 Ohio Street
Racine, WI 53405
David Angelici
262-898-3668
davidangelici@rogansshoes.com
www.rogansshoes.com

Supplier of safety footwear with on-site services available. Eight trucks servicing Midwest companies.

Safe-Fast, Inc.

■ BOOTH 318

2218 Seymour Road
Eau Claire, WI 54703
Martin Degenhardt
715-839-7615
marty@safe-fast.com
www.safe-fast.com
Safety products distributor

Safety Engineered Systems

■ BOOTH 319

19891 Emperor Court
Farmington, MN 55024
Bruce Duden
651-600-2621
bruced@safetyengineeredsystems.com
www.safetyengineeredsystems.com

SES is a specialty contractor with over 50 years of experience in the "engineered systems" marketplace. We provide the 'products' and 'services' to provide an OSHA compliant fall protection system to ensure a safe working environment for your employees.

Safety Rail Company

■ BOOTH 205

4244 Shoreline Drive
Spring Park, MN 55384
Kayla Larkin
888-434-2729
sales@safetyrailcompany.com
www.safetyrailcompany.com

Safety Rail Company LLC in Spring Park, Minnesota is a leading manufacturer of fall protection railing systems and related products for industrial/commercial applications.

Sakk Safety LLC

■ BOOTH 114

N3475 White Birch Road
Watersmeet, MI 49969
Steve McDonough
847-219-4039
Sakksafety2010@gmail.com
www.sakksafety.com

SaltCo LLC

■ BOOTH 216

2000 Prairie Street, Suite 212
Prairie du Sac, WI 53578
Tim Landgraf
608-712-1959
timlandgraf@saltco.com
www.saltco.com

Water Softening Salt Delivered From Outside Your Building Directly to Your Brine Tank! The ONLY fully remote salt delivery system in the world to deliver with No Pressure, No Dust, and 24/7 Monitoring!

Schwickert's Tecta America

■ BOOTH 520

330 Poplar Street
Mankato, MN 56001
507-387-3106
sschwickerts@schwickerts.com
www.schwickerts.com

Schwickert's Tecta America is a roofing and mechanical contractor that has been serving commercial building owners and residential homeowners across the Midwest since 1906. Headquartered in Mankato with branches in Savage and Rochester, MN, and Lawrence, KS, Schwickert's provides integrated products and services to customers in the areas of roofing, architectural metals, specialty fabrication, plumbing, piping, heating, air conditioning, refrigeration, electrical, and so much more.

Showa

■ BOOTH L703

579 Edison Street
Menlo, GA 30731
Amy Gilpin
205-293-6590
agilpin@showagroup.com
www.showagroup.com

SHOWA is synonymous with the highest degree of hand protection and innovation. Pioneering revolutionary technology, we've forever changed and improved our industry with over 1,800 gloves meticulously engineered for excellence. Down to every fiber, our gloves are created better to perform better, unleashing new potential for hands at work.

Silva Non Skid Solutions LLC

■ BOOTH 416

217 Center Street
Manawa, WI 54949
Allen Hildebrand
920-205-4075
allen@silvagrip.com
www.silvagrip.com

Silvagrip: A Peel-N-Stick anti slip floor coating for foot traction. Long lasting made of all metal, thermal sprayed. Stainless steel backing (not paper) with aluminum/titanium particles sparry and solidified in location. The titanium alloyed with the aluminum makes a very hard and durable alloy with pointed surfaces for the rubber sole. The two together create

MEET OUR EXHIBITORS

foot traction that is not equaled. The US Navy has tested Silvagrip on two ships; the USS Mahan was on the deck for 7 years and the USS Oak Hill for 6 years. Then the decks needed to be repainted.

SKC, Inc.

■ BOOTH 621

863 Valley View Road
Eighty Four, PA 15330
Ian Kindig
724-260-0738
ikindig@skcinc.com
www.skcinc.com

SKC is the leader in sampling solutions and expertise for OEHS professionals, air, noise, heat, and surface/dermal. Our trusted science, serving people for over 60 years.

SmartCells Anti-Fatigue Solutions

■ BOOTH 105

P.O. Box 1264
Chehalis, WA 98532
Jason Herr
360-748-8711
www.smartcellsusa.com

SmartCells Anti-Fatigue Solutions manufactures anti-fatigue solutions that utilize their patented SmartCells Technology to keep standing workers safe, comfortable and productive.

Soundtrace

■ BOOTH L707

10078 East Kemper Road
Lovedland, OH 45140
Jeff Wilson
513-349-8659
jeff@soundtrace.com
www.soundtrace.com

Soundtrace has modernized how businesses conduct employee hearing tests. We replace the need for mobile vans or office clinics with an efficient and straightforward digital platform.

Sonetics Corporation

■ BOOTH 420

17600 SW 65th Avenue
Lake Oswego, OR 97035
William Ludwig
503-608-3406
william.ludwig@sonetics.com
www.sonetics.com

Wireless communication and hearing protection solutions to enhance safety, accelerate training and increase productivity.

Southern Minnesota Inspection

■ BOOTH 121

211 Johnson Street
Eagle Lake, MN 56024
Scott Wilson
507-508-9538
swilson@southernminnesotainspection.com
www.southernminnesotainspection.com

Southern Minnesota Inspection is a safety inspection company that performs inspections, based on ASME and OSHA requirements, on hoists, cranes, aerial lifts (MEWP), rigging, fall protection and many other safety devices and systems. We also offer operator safety training, custom lifting solutions and equipment replacement options.

Sundstrom Respiratory

■ BOOTH 603

143 Maple Street
Warwick, RI 02888
Jim Kukolla
317-362-7857
jim.kukolla@srsafety.com
www.srsafety.com/us

Sundstrom Respiratory designs, engineers and manufacture World Class Respiratory protection. Including PAPR's, full and half mask respirators. We make respirators that are easy to wear and have the lowest breathing resistance on the market.

SureWerx

■ BOOTH 101/103

325 Corporate Drive
Elgin, IL 60123
Colleen Radavich
630-306-1732
cradavich@surewerx.com
www.surewerx.com

Our K1 Series Mid-Sole, a one-size-fits all, innovative ice cleat solution for real traction in icy conditions. Also available in Certified Intrinsic versions!

The Teehive

■ BOOTH 221

13143 Cypress Drive South
Baxter, MN 56425
Aaron Otteson
218-232-5359
ottie@theteehive.com
www.theteehive.com

At the Teehive, we go beyond custom apparel — we're your ally in elevating your brand, uniting your team, and enhancing your events. Our team is here to assist in navigating pricing, product choices and timelines, accommodating budgets of all sizes. It's not just about standing out; it's about getting it right, and we're here to make sure you do.

Thompson Solutions Group

■ BOOTH 308

2300 6th Street
Sioux City, IA 51105
Mike Pendergast
712-224-3830
mike.pendergast@thompsonsolutionsgroup.com
www.thompsonsolutionsgroup.com

Thompson provides expertise in the areas of Arc Flash, Electrical Safety, Safety Training, Electrical Preventative Maintenance and Electrical Engineering. Thompson conducts Arc Flash Risk Assessments, implements preventative maintenance programs, helps to ensure your electrical systems are operating properly and efficiently.

TKDA

■ BOOTH 303

3311 East Old Shakopee Road
Bloomington, MN 55425
Julie Tufte
651-443-1754
julie.tufte@tkda.com
www.tkda.com

TKDA's engineers, architects, planners, and specialized experts solve client challenges across four primary markets: Transportation, Industrial and Manufacturing, Buildings and Sites, and Water. Our culture and design solutions reflect an unwavering dedication to the safety of our team members, clients, communities, and partners.

MEET OUR EXHIBITORS

Trav's Outfitter

■ BOOTH 309

2610 8th Avenue Southeast
Watertown, SD 57201
Gregg Selberg
605-695-4442
gregg@travsoutfitter.com
www.travsoutfitter.com

Trav's Outfitter provides safety shoes and boots in our 30,000 sq ft. facility in Watertown, SD and has 4-boot trucks each carrying 100-styles and 1,200 pairs each. We bring The Safety Shoe to you!

TSI Incorporated

■ BOOTH 619

500 Cardigan Road
Shoreview, MN 55126
www.tsi.com

Around the globe, TSI provides a comprehensive range of solutions with unparalleled reliability and accuracy necessary to accomplish your goals. From workflow management, software services and measurement instrumentation, our complete suite of solutions are tailored to help you make informed, data-driven decisions to get your job done. Visit us at TSI.com

UniFirst First Aid + Safety

■ BOOTH 115

17080 Alico Commerce Court
Fort Myers, FL 33967
Jessie Negron
239-634-7965
jessie_negron@unifirst.com
www.unifirstfirstaidandsafety.com

UniFirst First Aid+ Safety provides a wide range of first aid and safety products and services to help you get the job done — including First Aid, Safety/PPE, Safety Training Programs, Fire Extinguisher/Emergency Exit/Lighting Inspections and Hearing/Respiratory Testing. We regularly check and restock all first aid and safety items as needed to help keep your staff healthy and safe on the job, while also keeping your business compliant with related ANSI/OSHA standards.

U.S. Compliance

■ BOOTH 512

520 Third Street, Suite 100
Excelsior, MN 55331
Kevin Weaver
888-897-8681
info@uscompliance.com
www.uscompliance.com

U.S. Compliance offers a comprehensive array of environmental, health and safety (EHS) service expertise for general industry throughout North America. Our proven compliance as a service (Caas) model provides an efficient and effective means to maintaining regulatory obligations.

Veritas Crane

■ BOOTH 107

3350 35th Avenue South
Fargo, ND 58104
Al Weigel
701-540-8488
al@veritascrane.com
www.veritascrane.com

Veritas Crane provides regional and onsite training at your facility for crane related topics. Offering National Commission for the Certification of Crane Operators (NCCCO) classes, and practical examinations. Mobile cranes, overhead cranes and rigger/signal person. Overhead crane inspection services. Wire rope, NDT testing services and equipment.

Walman Optical Safety Eyewear

■ BOOTH 401/500

801 12th Avenue North
Minneapolis, MN 55411
Jeff Marcella
612-819-8096
jmarcella@walmanoptical.com
www.walmanoptical.com

Like you, Walman Optical Safety Eyewear is focused on reducing recordable injuries in the workplace. We do this by building a customized program for your company and manufacturing the safety eyewear that keeps your employees seeing safely, within your budget. Plus, our dedicated team is just one call away and with usage and eligibility tracking online, your safety eyewear program is easy and simple for you, too.

Wells Lamont Industrial

■ BOOTH 313

5215 Old Orchard Road, Suite 725
Skokie, IL 60077
Karen Meger
847-983-1446
kmeger@wellslamontindustrial.com
www.wellslamontindustrial.com

Wells Lamont Industrial offers hand protection and arm protection solutions including cut resistant, heat resistant, palm coated, impact resistant, leather gloves and much more.

Werner Co

■ BOOTH 202

555 Pierce Road
Itasca, IL 60143
Cameron Haney
952-454-4413
cameron.haney@lawlessgroup.com
www.wernerco.com/us
Werner ladders and fall protection.

Winter Walking

■ BOOTH L702

400 Babylon Road
Horsham, PA 19044
Eric Bell
888-667-5477
Eric@WinterWalking.com
www.winterwalking.com

Winter Walking is dedicated to revolutionizing safety in cold weather environments. With a relentless commitment to innovation and quality, Winter Walking provides unparalleled solutions for preventing slips and falls in icy conditions. For over 40 years, our team has been at the forefront of developing ice cleats that enhance stability and confidence for workers facing winter's challenges.

ZOLL Medical Corporation

■ BOOTH 315

269 Mill Road
Chelmsford, MA 01824
Steve Dahlen
612-987-9965
steve.dahlen@zoll.com
www.zoll.com/publicsafety

ZOLL® Medical provides AEDs, interactive trauma kits and program management for schools, fitness centers, corporations, law enforcement, and other organizations that accommodate or serve the public.

THANK YOU TO OUR 2025 DOOR PRIZE CONTRIBUTORS!

- AVEDA
- CavCom
- Granterion 3PL Solutions,
A Bluestem Brands Company
- Institute for Environmental
Assessment (IEA)
- Mall of America
- McGough Construction
- Minnesota Safety Council
- Red Wing Shoes
- Slumberland
- Walman Optical Company

Drive
SAFE

Work
SAFE

Live
SAFE

THANK YOU FOR JOINING US!
SEE YOU NEXT YEAR:

May 5–6, 2026

**MINNESOTA SAFETY &
HEALTH CONFERENCE**

MYSTIC LAKE CENTER | PRIOR LAKE, MN

Conference and Expo on Tuesday, May 5 and
Wednesday, May 6 with Professional Development
Courses (PDC) on Monday, May 4.

FIND US ON SOCIAL MEDIA

[f](#) [in](#) [X](#) [@MNSafetyCouncil](#)

**SAVE
.....THE.....
DATE**